

TEAM
DESIGN
CRAFT

THE PROCESS
ISSUE NO.25



DANCER

POLISH | COATINGS | TERRAZZO | PRECAST





MCMILLEN FAMILY PAVILION AT FRANKE PARK

TABLE OF CONTENTS

Floors for the Modern World.....	3
----------------------------------	---

SYSTEMS

STRONGTREAD POLISH	6
StrongTread Systems.....	7
StrongTread Modern.....	8
StrongTread Classic.....	9
StrongTread Remodel.....	10
StrongTread Deep.....	11
Penetrating Concrete Dyes.....	12
Reactive Concrete Stains.....	14
Testimonials.....	17
Samples.....	20
Continuing Education.....	21

SYSTEMS

STRONGTREAD SEALED	22
StrongTread Hardwear.....	23
StrongTread Saver.....	24
StrongTread Cure.....	25

SYSTEMS

TREADWELL COATINGS	26
Selecting the Right System.....	27
TreadWell Clear+.....	29
TreadWell Industrial+.....	30
TreadWell Urethane Mortar.....	31

TreadWell Decorative Chip.....	32
--------------------------------	----

TreadWell Decorative Quartz.....	33
----------------------------------	----

TreadWell Flex+.....	34
----------------------	----

TreadWell Pool Deck+.....	34
---------------------------	----

TreadWell Court+.....	35
-----------------------	----

Solid Coating Colors.....	35
---------------------------	----

Cover Feature.....	36
--------------------	----

SYSTEMS

SURFACE TERRAZZO	40
-------------------------------	----

Surface Terrazzo.....	41
-----------------------	----

Surface Polish.....	42
---------------------	----

Surface Smooth.....	43
---------------------	----

SYSTEMS

CAST PRODUCTS	44
----------------------------	----

CAST Structural Open Riser.....	45
---------------------------------	----

CAST Rise-Run Tread.....	45
--------------------------	----

CAST Structural Center Stringer.....	46
--------------------------------------	----

CAST Curved Tread.....	46
------------------------	----

CAST Flat Tread.....	47
----------------------	----

CAST Vertical Base.....	47
-------------------------	----

Work Here.....	48
----------------	----

Growing Leaders.....	49
----------------------	----

Contributors/Photographers.....	50
---------------------------------	----

FLOORS FOR THE MODERN WORLD

Every time we're chosen for a project, it means a client believes in us. We are grateful for the opportunity and we take that responsibility seriously. Here are a few reasons how we serve you better.



TEAM DESIGN CRAFT

Salt-of-the-earth people—responsible, responsive, and built with grit.

When details matter and it's hard to do—we want in.

If it's going to last, it has to be right.

This 2025 Process Magazine highlights a few of the projects that we are pumped to be a part of and hope they inspire your next design. When I can be helpful, my cell is **260.415.1951**.

Nick Dancer

Nick Dancer
Founder + Owner



Find us @dancer.design
for the latest project photos,
videos, and team highlights.





TEAM





STRONGTREAD POLISH

Polished concrete floors are one of the most sustainable flooring solutions available. With a low lifetime cost, simple maintenance, and long-term durability, our StrongTread systems are crafted to fit a variety of environments and architectural styles.

CHOOSE YOUR **POLISHED** CONCRETE FLOOR

Class A | StrongTread **Modern**

Cream Aggregate: Light sand exposure with a creamy appearance.
The surface is simply polished and not ground, exposing little to no aggregate.

Class B | StrongTread **Classic**

Fine/Sand Aggregate: Fine aggregate exposure with some cream.
Grinding and polishing removes up to 1/16" of the concrete surface, exposing fine aggregate throughout the majority of the floor.

Class C | StrongTread **Deep**

Large Aggregate: Heavy aggregate exposure.
Grinding and polishing removes up to 1/4" of the concrete surface, exposing large aggregate throughout the majority of the floor.

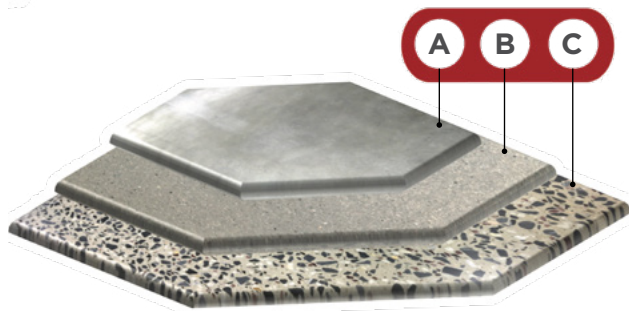


IMAGE BY CONCRETE POLISHING COUNCIL

FINISH LEVELS



FLAT
200 GRIT, LEVEL 1



SATIN
400 GRIT, LEVEL 2



POLISHED
800 GRIT, LEVEL 3

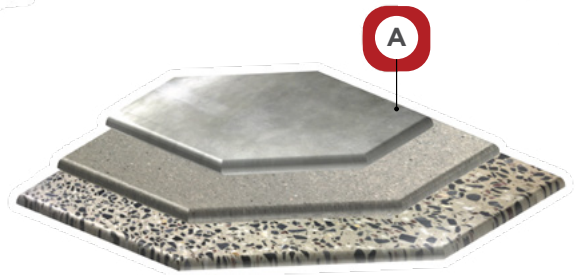


HIGHLY POLISHED
1500 GRIT, LEVEL 4

STRONGTREAD MODERN

StrongTread Modern hones and polishes the cream – or cap – of the concrete floor to bring out natural character in the fresh concrete. There is minimal aggregate exposure in this finish, just a smooth surface with as much sheen as your space needs.

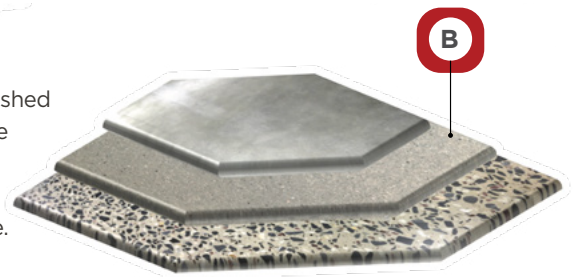
Aggregate: Class A



STRONGTREAD CLASSIC

StrongTread Classic is the look when you think of polished concrete. The cap of the slab is removed to expose the small aggregates used when pouring the concrete, creating a visual texture on the surface. It is a great base for adding color or for keeping in its natural state.

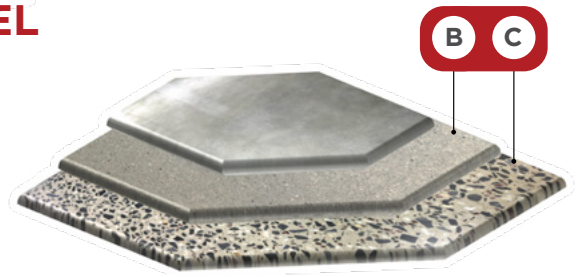
Aggregate: Class B



STRONGTREAD REMODEL

StrongTread Remodel offers a great look when embracing concrete's age and character in a remodel space. Various aggregate and color tones will accompany this floor.

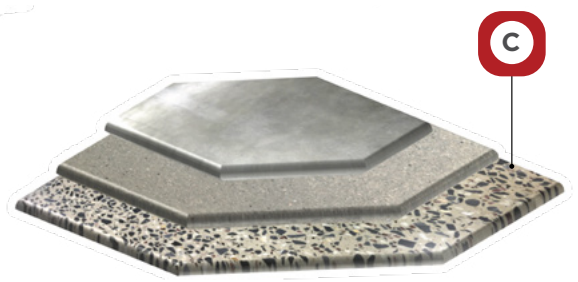
Aggregate: Class B + C



STRONGTREAD DEEP

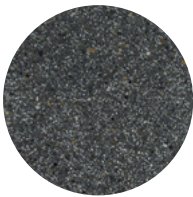
StrongTread Deep digs deep into the concrete surface to reveal the large stones used as the building blocks of strength. When you want an even, consistent deep stone exposure, this system offers the look of large aggregate as the main finish.

Aggregate: Class C

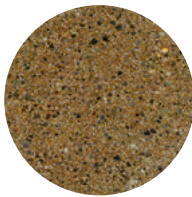


PENETRATING CONCRETE DYES

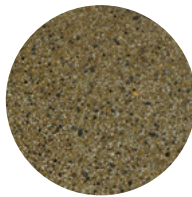
A penetrating concrete dye can be used on indoor concrete polishing or sealing applications. This dye penetrates deep into porous concrete surfaces, creating a long-lasting, durable color treatment for interior concrete floors. Depending on the concrete substrate, this translucent coloring system can have variations. Penetrating concrete dye is our most economic coloring solution.



Black



Burnt Sienna



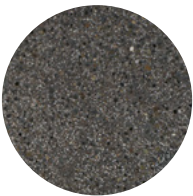
Carmel



Chestnut



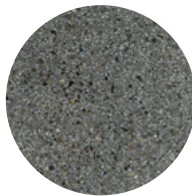
Chocolate Brown



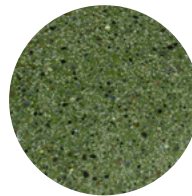
Eggplant



Forest Green



Gray



Green



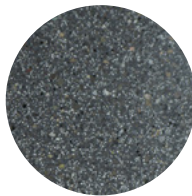
Gold



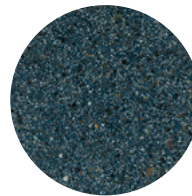
Mahogany



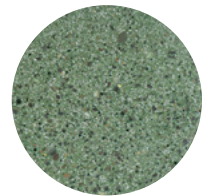
Maroon



Midnight Black



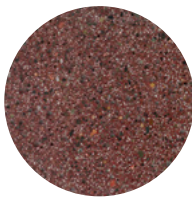
Patriot Blue



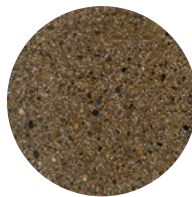
Pine Green



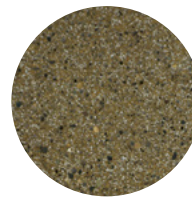
Raw Sienna



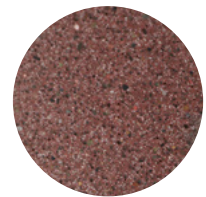
Red



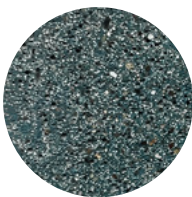
Saddle Brown



Sand



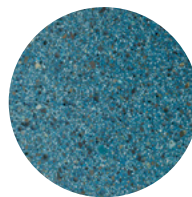
Sepia



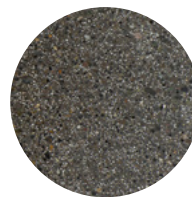
Slate Blue



Terra Cotta



Turquoise

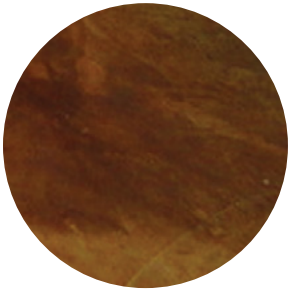


Walnut

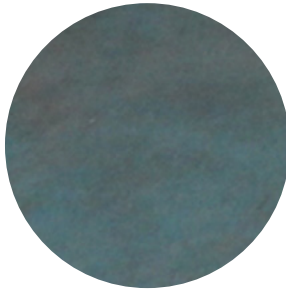


REACTIVE CONCRETE STAINS

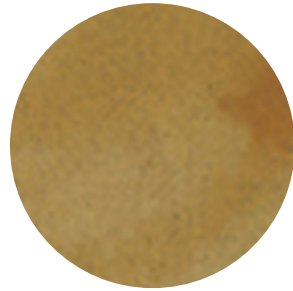
Reactive concrete stains work with the existing chemical makeup of concrete to produce variegated coloring throughout the surface. This coloring method provides permanent coloring to the floor surface, and typically produces a marbled appearance.



Gold



Azure Blue



Malayan Bluff



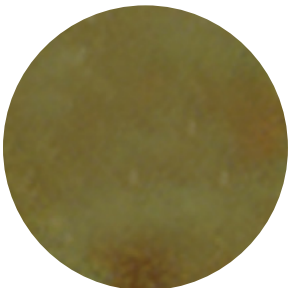
Mesquite



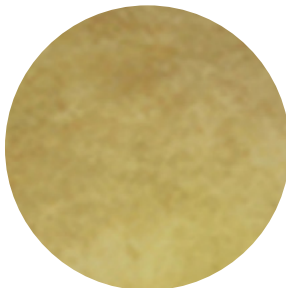
Wenge Wood



Soft Maple



Shifting Sand



Desert Amber



Coffee Brown





OFFICES



PUBLIC SPACES



RESTAURANTS



WAREHOUSES



**"We love our floors!
They really elevate the entire facility."**

Jim Palermo, Executive Director at the Pearl Street Arts Center



**"Subcontractors can make or break
a construction project. DANCER gets
after it, doesn't waste time, works hard,
and does excellent work."**

Chris Freeman, Lead Pastor at City Church Fort Wayne



**"Our floors are perfect! Everybody took
such great pride in creating one of the most
beautiful Humane Societies in the United States.
We're thrilled to have worked with DANCER!"**

Jessica Henry-Johnson, Executive Director of Humane Fort Wayne



DESIGN



SAMPLES

DANCER provides custom samples for you to make the best design-driven decisions.

Choosing the right finished flooring for your space can feel like a daunting task. Our samples can help.

Polished Concrete samples come in 3" wide pucks.

Epoxy Coatings come in 4" x 6" samples.

Terrazzo samples come in 3" wide pucks or 6" x 6" squares.

We also offer Sample Boxes that include:

- StrongTread Modern
- StrongTread Classic
- StrongTread Deep
- Surface Terrazzo
- TreadWell Industrial+
- TreadWell Decorative Chip
- TreadWell Decorative Quartz
- TreadWell Urethane Mortar

Reach out to create@dancer.design to request samples for your next project.



CONTINUING EDUCATION WITH DANCER



**Approved
Continuing
Education**



Attend an AIA- and IDCEC-accredited Lunch and Learn hosted by DANCER at your office, our Fort Wayne Shop, or online.

We offer two one-hour presentations:

- **Choices With Terrazzo — Designed to Last**

Develop a thorough understanding of the design principles when using Terrazzo for your project. Understand basic budgeting, design considerations, finishes, and maintenance for this long-term, durable finish choice.

- **Polished Concrete and Epoxy Coatings — Are They Right For Your Project?**

Learn how polished concrete and epoxy coatings can produce some of the most durable finished floors and understand which systems are best for food and beverage, retail, education, manufacturing, and warehousing spaces.



REACH OUT TO SCHEDULE

Nick Dancer
260-415-1951
nick@dancer.design



STRONGTREAD SEALED

Protect your concrete floors with one of our sealed flooring options. Sealed concrete is an affordable finish that will prolong the durability and appearance of your floors.

STRONGTREAD **HARDWEAR**

StrongTread Hardwear is a sealed concrete system for new construction concrete floors, using penetrating concrete densification and stain guard products. This system is abrasion resistant, easy to clean, and hardens the concrete over time.



STRONGTREAD SAVER

StrongTread Saver is a sealed concrete system for remodel projects. This system is a grind and seal process and uses the same products as our polished concrete floor with fewer mechanical passes, resulting in a softer sheen — a great fit for a clean floor with a budget.



STRONGTREAD CURE

StrongTread Cure is a sealed concrete system that incorporates premium densifiers used during the concrete placement process. This is the most affordable system, offering better long-term durability than traditional acrylic curing compounds or concrete sealers.





TREADWELL COATINGS

Outperform other hard-surface flooring with a safe, seamless, and durable floor coating system. Resinous, epoxy, and mortar coatings enhance environments across the board, even in the most abusive environments. Create the space you envision with multiple design options.

SELECTING THE RIGHT SYSTEM


UNDERSTANDING THE DIFFERENCE BETWEEN COATING OPTIONS



	TREADWELL	Cost	Maintenance	Thermal Shock	Impact Resistance
Solid	Clear+	●	●		●
	Industrial+	● ●	●		● ●
	Urethane Mortar	● ● ●	●	●	● ● ● ●
	*ESD+	● ● ●	●		● ● ●
	*Traffic+	● ● ●	●		● ● ●
Decorative	Decorative Chip	● ●	●		● ●
	Decorative Quartz	● ● ●	●		● ● ● ●
	Flex+	● ● ●	●		● ● ●
	*Metallic+	● ● ●	●		● ● ●

● Mop

● Broom/Squeegee

*Find these systems on our website at dancer.design 



LOCKER ROOMS



RESTAURANTS



MANUFACTURING



AUTOMOTIVE

TREADWELL CLEAR+

TreadWell Clear+ is a light duty, hybrid sealing system that provides the look of polished concrete with the topical advantages of epoxies and urethanes.



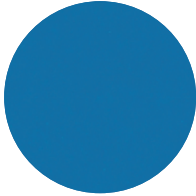
TREADWELL INDUSTRIAL+

TreadWell Industrial+ is a medium duty solid color epoxy flooring system that provides a durable and seamless floor.

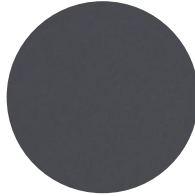


TREADWELL URETHANE MORTAR

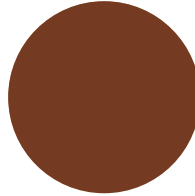
TreadWell Urethane Mortar is a heavy duty flooring system for the most abusive environments. It provides the highest level of impact and chemical resistance and extreme temperature performance.



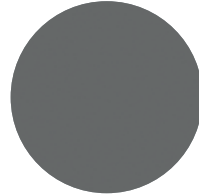
Blue



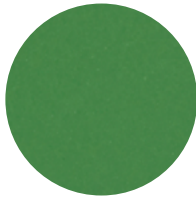
Charcoal



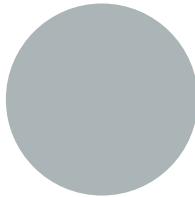
Chestnut



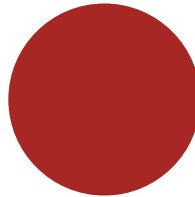
Dark Gray



Green



Gray



Red



TREADWELL **DECORATIVE CHIP**

TreadWell Decorative Chip is a medium duty flooring system with a vinyl chip broadcast to create a durable and seamless floor with an orange-peel textured finish.

Color combinations available online at dancer.design 



TREADWELL DECORATIVE QUARTZ

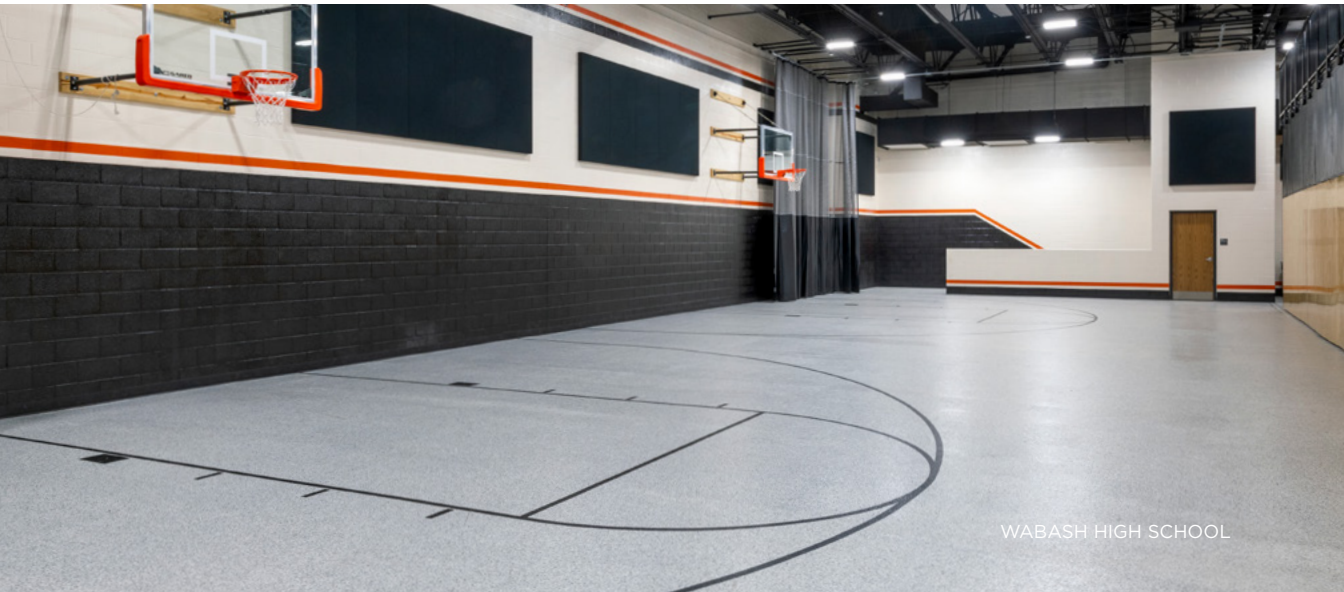
TreadWell Decorative Quartz is a medium duty flooring system with a quartz broadcast that provides slip and stain resistance, durability, and seamless floor.

Color combinations available online at dancer.design 



TREADWELL FLEX+

TreadWell Flex+ is a medium duty, rubberized epoxy flooring system designed for multi-story installations. This system has more elasticity than a traditional epoxy system to prevent cracking and create a waterproof membrane.



WABASH HIGH SCHOOL

TREADWELL POOL DECK+

TreadWell Pool Deck+ is a medium duty, exclusive coating system with a vinyl chip broadcast and a non-slip finish for installations around pools.



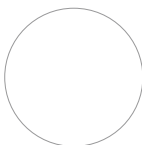
TREADWELL COURT+

TreadWell Court+ is a medium duty solid color flooring system with grip additives for indoor game areas like pickleball courts.



SOLID COATING COLORS

Coordinate your branding with your interior space by selecting one of our solid coating colors. Colors may be affected by age, heat, and exposure to sunlight.



White



Ivory



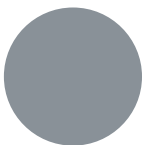
Beige



Light Gray



Medium Gray



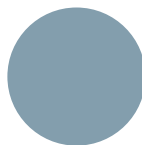
Slate Gray



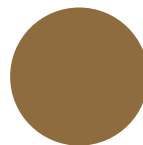
Concrete Gray



Charcoal



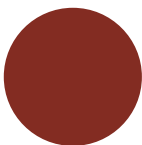
Smoke Blue



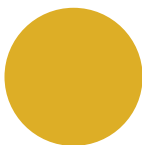
Caramel



Safety Red



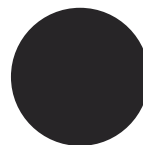
Tile Red



Safety Yellow



Green



Black

COVER FEATURE

RE. JUNE E. ENOCH AUDITORIUM

PEARL STREET ARTS CENTER

Pearl Street Arts Center is a community arts hub and performing arts venue in the former Perfection Bakery building in downtown Fort Wayne. Terrazzo flooring installed by DANCER spans the main hall and leads to the large auditorium. A custom blend of mother-of-pearl and marble chip gives the space a bright, sparkling appearance with its natural light.





CRAFT





SURFACE TERRAZZO

Craft timeless design, durability, and sustainability in your high-end space with terrazzo flooring. At DANCER, we install custom terrazzo and overlay projects that transform spaces into works of art. From luxury interiors to iconic public spaces, our Team combines modern innovation with traditional craftsmanship to create designs that last a lifetime.

SURFACE TERRAZZO

Surface Terrazzo is one of the most decorative and durable flooring options available. This overlay system is a 3/8" mixture of stone, glass, and other aggregates with an epoxy binder matrix to create an endless array of patterns, colors, and finishes.



SURFACE POLISH

Surface Polish is a concrete overlay that resembles classic salt-and-pepper polished concrete. This overlay is finished and polished like a traditional concrete floor.



SURFACE SMOOTH

Surface Smooth is a cream finished overlay for vertical surfaces with a soft, rich texture and finish similar to a brand new concrete pour. This overlay is finished with our TreadWell Clear+ system.





CAST PRODUCTS

Made in Indiana. Shipped Across America.

Transform your projects with DANCER's CAST Products – custom precast terrazzo and architectural solutions designed to elevate modern spaces. Our work includes stair treads, landings, and panels that seamlessly blend durability, sustainability, and design. Designed by You. Made in Indiana. Shipped Across America.

CAST STRUCTURAL OPEN RISER

CAST Structural Open Riser is a self-supporting, floating design. Internal steel supports allow the treads to span between stringers up to 8 feet across. Tread edges can be finished for an open or closed carriage.



CAST RISE-RUN TREAD

CAST Rise-Run Tread is an “L”-shaped design that gives a seamless look to your stairs. These treads are installed over a fully supported base and can be finished for an open or closed carriage.



CAST STRUCTURAL CENTER STRINGER

CAST Structural Center Stringer creates a modern floating step design in your space. Tread edges are finished for an open carriage unless specified.



PRIVATE RESIDENCE

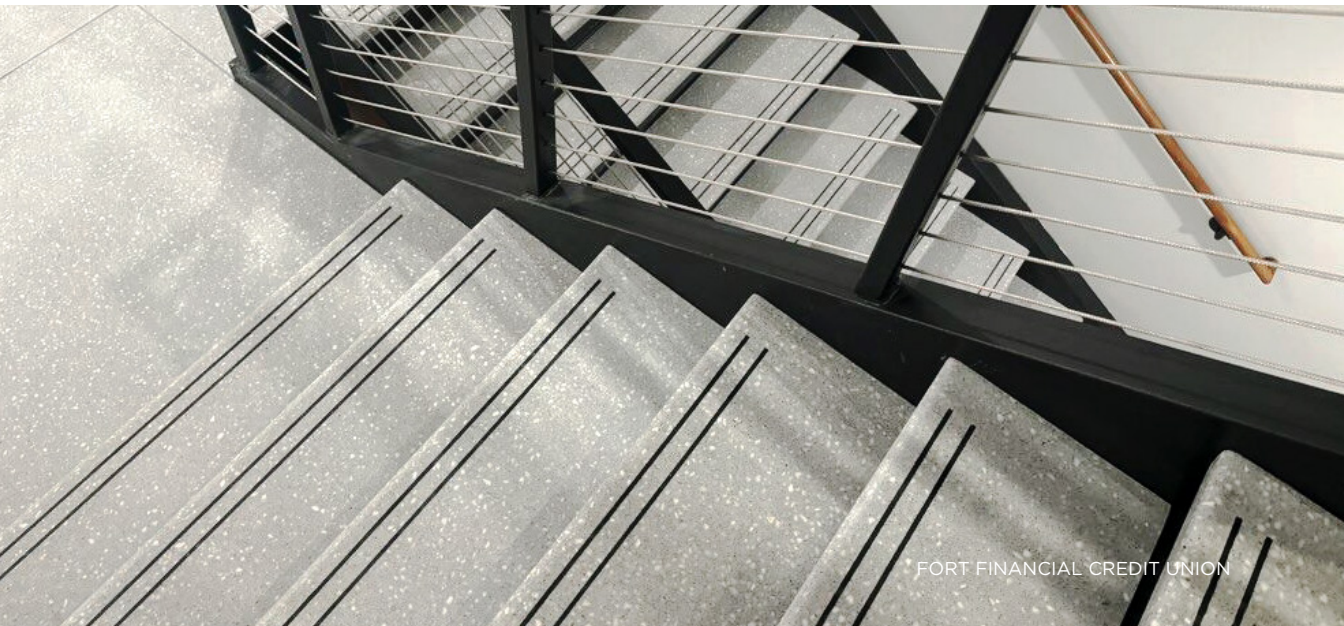
CAST CURVED TREAD

CAST Curved Tread are custom-formed stairs that are installed over a structural riser base. Tread edges can be finished for an open or closed carriage, depending on your project.



CAST **FLAT TREAD**

CAST Flat Tread is the horizontal platform of your stairs, which sit over a structural riser base. Tread edges can be finished for an open or closed carriage.



CAST **VERTICAL BASE**

CAST Vertical Base includes custom wall panels and base made to complement your CAST products and terrazzo flooring.





WORK HERE





GROWING LEADERS WHO DELIVER BEST WORK

Our Driving Force is Growing Leaders who deliver BEST WORK. We empower young men to become skilled craftsmen with their hands and business leaders with their minds.

At DANCER, we're a values-driven business with a clear vision: to become one of the best mid-market firms for the craftsmanship in our work and our operations.

Not just getting by. Not just another J-O-B.

But becoming one of the BEST.

Good for customers.

Good for the Team.

Built by the Team.

It's a bold path. But if you're one of those mad men (check out that QR code), let's chat.



Find us @dancer.design
for the latest project photos,
videos, and team highlights.



CONTRIBUTORS

Nick Dancer

Jason Swisher

Megan Sheetz

PHOTOGRAPHERS

Alexis Dancer

Ashton Barnes

Daniel Rohrbach

Nate + Mitch

Anchor Films

BFA Commercial Photography

The Process Magazine is a regular publication created by DANCER. Reproduction, duplication, distribution, and remix are encouraged provided you give credit to the material source and artists and allow the same conditions to your contributors.





ICREATE
OVER CONSUME

F10





POLISH | COATINGS | TERRAZZO | PRECAST



NATHAN HEINTZEMAN

PROJECT LEADER

(260) 452-0736

nathan@dancer.design



NOAH BOLLENBACHER

PROJECT LEADER

(260) 442-7534

noah@dancer.design



BRANDON COE

PROJECT LEADER

(260) 328-4364

brandon@dancer.design



DANCER

4411 Engle Ridge Dr. Fort Wayne, IN 46804

(260) 748-2252 | create@dancer.design

dancer.design