

•ISSUE•
23

THE PROCESS

DANCER CONCRETE DESIGN



A Note from the Founder

I was 15 years old the first time I stripped and waxed a terrazzo floor. I was working as a janitor at my high school over summer, and it was one of my favorite jobs. I worked alongside friends, had fun, and was entrusted to do most of the light construction work throughout the entire school.

20 years later, the same things get me excited—working alongside some of the best and hardest working people I know, being a part of the coolest construction projects in the region, and enjoying the work entrusted to me.

The Driving Force of our business is **GROWING LEADERS** who deliver **BEST WORK**. That's the reason we're the clear and easy choice when it comes to selecting a contractor for your polished concrete, terrazzo, and epoxy coating installations.

When you select a contractor to work with, you want the best value for your money. Here's how we work hard to make that true.

STRONG AND STEADY

Accountable. We don't believe in sales reps. Instead, we assign a Project Leader and Team Leader to every job. They become your point of contact and are accountable to bring your job from start to completion.

Owner Led. We believe the owner should be in the day-in, day-out operations—working with the team and clients, and always available. You can reach me anytime at my email at nickdancer@dancerconcrete.com or personal cell at 260-415-1951.

Local Focus. We believe people should take pride in doing good work within the communities they live. So we strive to make the cities we do business in better as a result of our work.

DESIGN DRIVEN

Problem Solving. Concrete is hard. Concrete problems are harder. We want to partner on your biggest challenges.

Balance. Get the right solution for budget, looks, durability, and maintenance—a harmony between options.

BEST WORK

Masters of ONE. We specialize our Team and tools in pursuit to be the best installers so that you get Few Mistakes, Faster Installations, and a Consistent Process over and over again.

Warranty. We include an all-inclusive direct labor and material 2-5 year warranty on all specified installations.

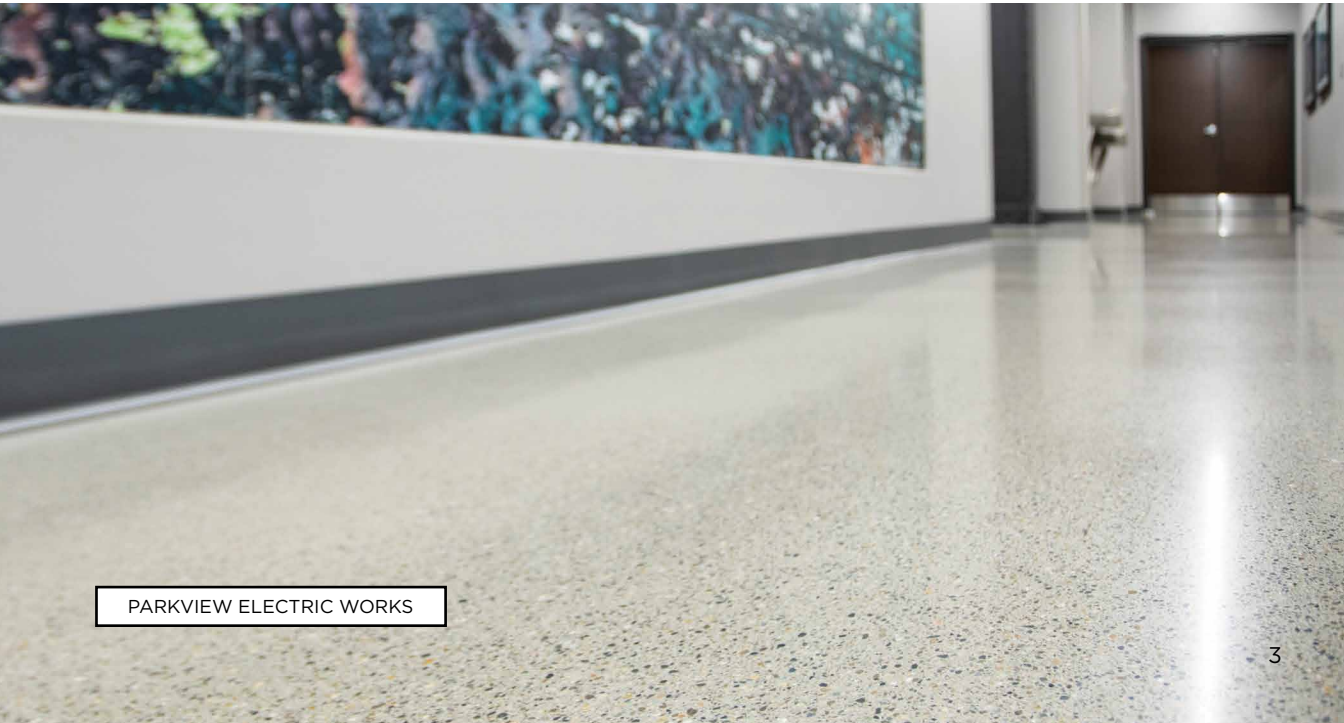


Nick Dancer

Founder + Owner
Dancer Concrete Design

Table of Contents

| | | | |
|--|----|--|----|
| Contributors..... | 4 | TreadWell | 28 |
| Project Highlight: Homestead Terrazzo..... | 5 | Project Highlight: Humane Society..... | 29 |
| Dancer Yearly Themes..... | 6 | Selecting the Right System..... | 30 |
| What is polished concrete..... | 7 | TreadWell Clear+..... | 31 |
| Customer Story: Electric Works..... | 8 | TreadWell Color+..... | 32 |
| StrongTread | 12 | Treadwell Industrial+..... | 34 |
| StrongTread Polish Systems..... | 14 | TreadWell Urethane Mortar..... | 35 |
| StrongTread Features..... | 16 | TreadWell Decorative Chip..... | 36 |
| Project Highlight: Warehouse..... | 17 | TreadWell Decorative Quartz..... | 37 |
| Penetrating Dye Colors..... | 18 | TreadWell Metallic+..... | 38 |
| Reactive Stain Colors..... | 19 | Why DCD..... | 39 |
| StrongTread Cure..... | 20 | Customer Testimonies..... | 40 |
| StrongTread Hardwear..... | 21 | Work Here..... | 41 |
| StrongTread Saver..... | 22 | Meet the Team..... | 42 |
| Project Highlight: Carr Workplaces..... | 23 | Social Media..... | 44 |
| Surface | 24 | Continuing Education with DCD..... | 45 |
| Surface Polish..... | 25 | CAST | 45 |
| Surface Smooth..... | 26 | Industrial | 48 |
| Surface Terrazzo..... | 27 | Service Area..... | 50 |
| | | Warranty..... | 51 |



CONTRIBUTERS



Nick + Alexis Dancer

Nick and Alexis Dancer own and operate Dancer Concrete Design. They live in Fort Wayne with their 4 children, Clark, Charlie, Clyde, and Chloe. They love walking around the neighborhood, playing at home, and creating adventures wherever they go.

SPECIAL THANKS TO:

Matt Ayers
Marshall Aspy



Nicolle Ginter

Nicolle Ginter owns and operates VimAnnVigor, a graphic design studio. She and her family reside in Phoenix, AZ. She has a love for beautiful design, cooking, baking, reading, and spending quality time with her family.



Megan Sheetz

Megan joined the DCD team in 2022 to be our visual problem solver. She enjoys troubleshooting, has a knack for details and writing, and gets stuff done. She lives in Fort Wayne with her husband and two cats and runs her own art business, Megan Sheetz Studios.



Thank you to all who make this business possible. To the clients who choose to work with us, our vendors, and our Team. Without you none of this would be possible. We are extremely grateful for the opportunity you have given us to be a part of your projects and lives.

- *Nick and Alexis Dancer*

The Process Magazine is a regular publication created by Dancer Concrete. Reproduction, duplication, distribution, and remix are encouraged provided you give credit to the material source and artists and allow the same conditions to your contributors.



Project Highlight

Homestead Terrazzo

Homestead High School is expanding their existing campus to accommodate their growing student population in Southwest Allen County. To date, we have installed about 20,000 square feet of terrazzo in two colors as well as a custom twenty foot wide logo.

Specifications

Surface Terrazzo

Subtle Sheen

Georgia White and Texas Blue

Custom Stone Blend

White and Knitting Needles

Epoxy Resins

YEARLY THEMES

Every year, we host a theme. It's a fun way to bring a new attitude and thinking process into our company for the year. We celebrate it with handouts, new t-shirts, and signs. It's also our belief that businesses have the opportunity to impact people beyond just the products or services they sell.

Here are a few of our recent themes:



2023 THEME

FOCUS TO THE FINISH

Something finished well is better than more done haphazardly.

Focus on each step, and the finish is inevitable.

Focus To The Finish.



2022



2021



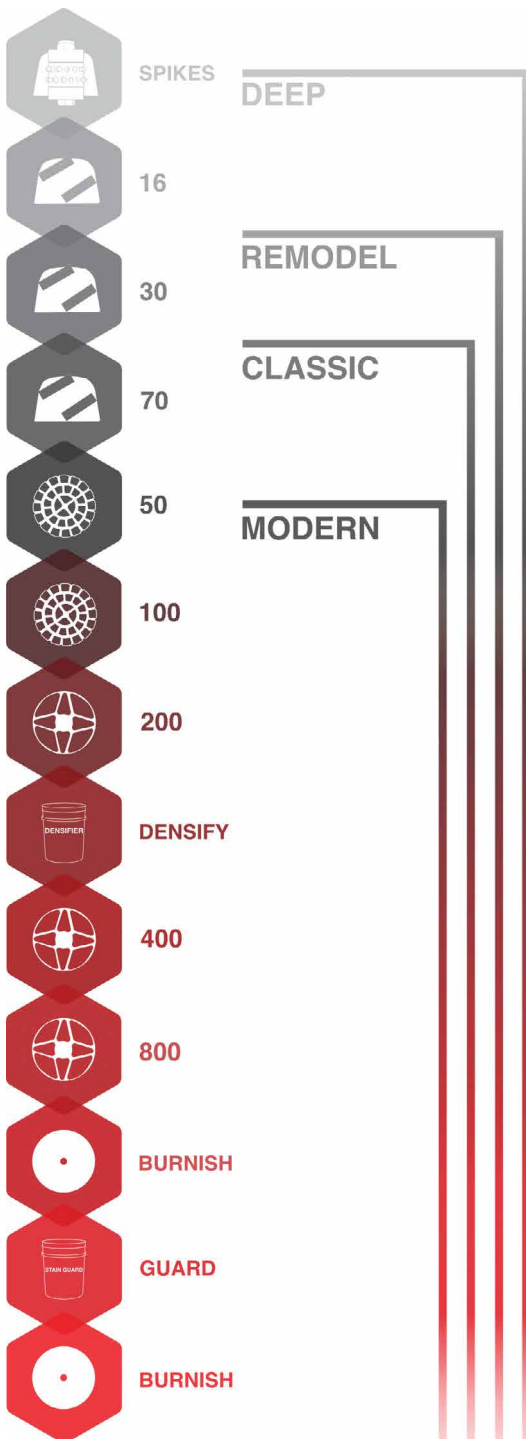
2020



2019

scan to learn more →





What is Polished Concrete?

A polished concrete floor is one that has been mechanically finished through grinding, honing, and polishing, as well as treated with a penetrating densifier to harden and dust proof the surface.

Polished concrete is one of the most economical flooring options since it uses the existing structural element—concrete—for the finished surface, and because it has one of the lowest lifetime maintenance costs. Its sustainability makes it a “green” flooring system and LEED approved.

DCD offers a variety of custom options for polished concrete, including: dyes, stains, scoring cuts, decorative engraving, borders, and logos.

Although polished concrete is great for a variety of settings, it is not recommended for areas with constant water exposure. DCD’s sealed or epoxy options offer a better fit for these environments.



ELECTRIC WORKS

A Customer Story

More than 100 years after the campus was built, Electric Works is buzzing with activity, including a STEAM school, a health clinic, co-working spaces, local businesses, and a food hall – Union Street Market. Folks gather at tables lining the glass windows and garage doors in the East and West Halls for coffee meet-ups in the morning and enjoy a meal with family and friends for lunch and dinner. Colorful art murals line the Arcade, the adjoining common seating area between the two Halls. The natural light from the glass windows and garage doors reflect a subtle sheen off the polished concrete floors to brighten the space.

If you look up, you'll see the individual lines between the boards from where they poured the concrete ceiling in 1922, says Jeff Bragiel, Project Manager for Electric Work's general contractor, Weigand Construction. Everything in the space has been thoughtfully designed from top to bottom to honor the buildings' original construction.



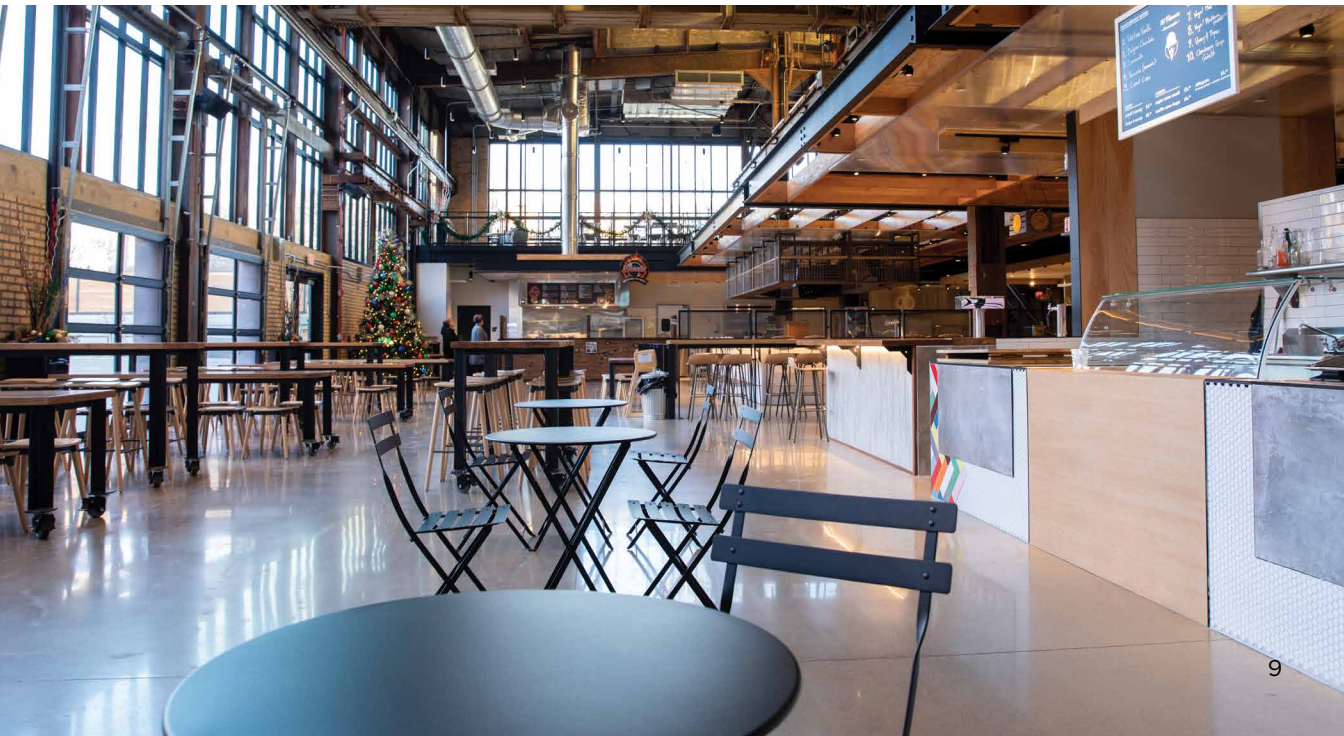
Specifications

StrongTread Classic

800 Grit

Gloss

Natural



Dancer Concrete Design was recommended for the Union Street Market project by Bragiel. Dancer Concrete Design's attention to detail – from initial samples down to the control joint fill across the Halls – was flawless. We worked closely with the

architects, designers, and general contractor to select finishes, schedule pre-grind and polishing installations, make design changes, and ultimately deliver the final finished floors.



Specifications

StrongTread Deep

800 Grit

Gloss

Natural



You'll find our salt-and-pepper StrongTread Classic Polish system in the main floor of the West Hall; our StrongTread Saver system in the West Hall's mezzanine; a custom sealed system on the stamped concrete in the East Hall; and large aggregate exposure with our StrongTread Deep Polish in the Arcade. These spaces are all defined by the finished concrete floors that Dancer Concrete Design installed at Union Street Market.

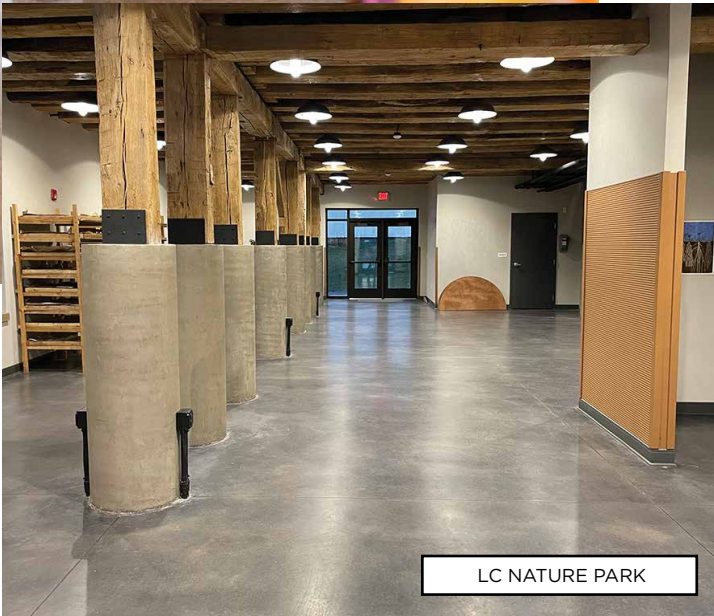
The Market is the community hub on the Electric Works campus with a constant evolution of people who get to come in and experience the public space. It's a destination in the heart of greater Fort Wayne to be proud of.

Specifications

StrongTread Hardware
Subtle Sheen
Natural



FUSION YOGA



LC NATURE PARK

STRONGTREAD

.....

StrongTread by Dancer Concrete Design is a brand of penetrating surface treatments designed for long-term durability and sustainability densifying, hardening, and dust-proofing concrete surfaces.

STRONGTREAD

POLISH

StrongTread Polish is one of the most sustainable flooring solutions available. With a low lifetime cost, simple maintenance, and long-term durability, this polished concrete system provides great value for anyone looking into hard-surface flooring. With the ability to transform your floor by adding a dye or stain, polished concrete is crafted to fit a variety of environments and styles.

FINISHES

Matte, Satin, High Sheen, Super Sheen

USES

Retail, Homes, Churches, Corridors, Event Venues, Multi-Purpose Spaces



ROANOKE ELEMENTARY SCHOOL

STRONGTREAD POLISH SYSTEMS

Class A

Cream Aggregate: Light sand exposure with a creamy appearance. The surface is simply polished and not ground, exposing little to no aggregate.

Class B

Fine/Sand Aggregate: Fine aggregate exposure with some cream. Grinding and polishing removes up to 1/16" of the concrete surface, exposing fine aggregate throughout the majority of the floor.

Class C

Large Aggregate: Heavy aggregate exposure. Grinding and polishing removes up to 1/4" of the concrete surface, exposing large aggregate throughout the majority of the floor.

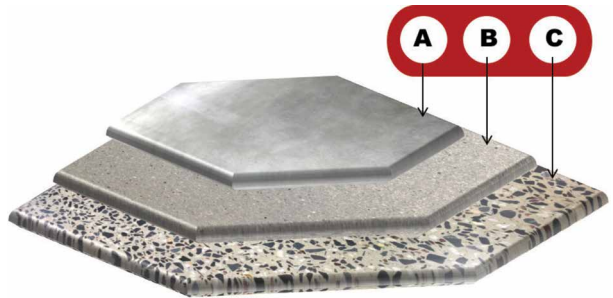


IMAGE BY: CONCRETE POLISHING COUNCIL

FINISH LEVELS



MATTE FINISH
200 GRIT, LEVEL 0
Matte Finish polishing produces a concrete floor with a soft, matte finish that is easy to maintain. This option is popular in residential and industrial settings, and is the most economical finish level.



SATIN FINISH
400 GRIT, LEVEL 1
Satin Finish polishing produces a diffused reflection and is a popular base level floor finish.



HIGH SHEEN
800 GRIT, LEVEL 2
High Sheen polishing produces a sheen on the floor that will clearly reflect identifiable objects. This is a popular flooring option for restaurants, retail facilities, and other areas where a high sheen is desired.



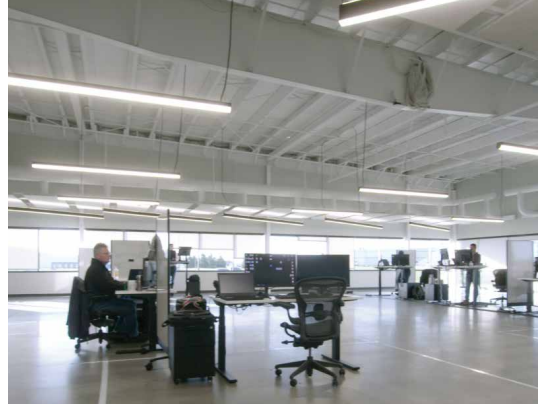
SUPER SHEEN
1500 GRIT, LEVEL 3
Super Sheen polishing produces a highly-polished surface that reflects color, light, and objects in a mirror-like reflection. This is a popular flooring option for museums, schools, and anywhere a stunning finish is desired.



STRONGTREAD POLISH: MODERN

In this architectural favorite finish, the cream - or cap - of the concrete floor is honed and polished to enhance and embrace the character of the concrete and finishing techniques. Some texture and finishing marks are key elements in this finish.

Aggregate: Class A
New, unsealed concrete only



STRONGTREAD POLISH: CLASSIC

The classic look when people think of polished concrete. The cap of the slab is removed to expose the small aggregates used when pouring and creates visual texture on the surface. A great base for keeping in its natural state or by adding color.

Aggregate: Class B



STRONGTREAD POLISH: REMODEL

Our Remodel floor system offers a great look when embracing concrete's age and character in a remodel space. Various aggregate and color tones will accompany this floor.

Aggregate: Class B + C



STRONGTREAD POLISH: DEEP

Digging deep into the concrete surface, we find large stones used as the building blocks of strength. When wanting an even, consistent, deep stone exposure, this system offers the look of large aggregate as the main finish.

Aggregate: Class C

FEATURES OF POLISHED CONCRETE



GROUT COATING

The grout coating application fills in naturally occurring pinholes, small air pockets, and aggregate pop-outs in a concrete floor. This process offers a higher overall reflectivity and a less porous surface, and is recommended for air entrained concrete and/or concrete that will be heavily ground to remove sealers, coatings, or when aesthetics are a top priority. The availability of this option is typically unknown until the concrete floor has been prepared and the initial pass is complete.



CONTROL JOINT FILLING

Control Joints are planned by an architect in the design of a space, and placed in the concrete slab when poured. These joints are filled with a polyurea compound to protect the joint edges from chipping, in addition to keeping dirt and debris out. This filler is available in many color options to complement the floor.



CONCRETE DENSIFYING + STAIN GUARD

All StrongTread Polish floor installations include a two-application process; premium concrete densification treatment and stain guard conditioning. These two steps penetrate into the concrete surface to increase abrasion resistance, decrease permeability, maintain a co-efficient of friction for slip-resistance, and provide one of the most durable hard-surface flooring systems available.



Project Highlight

Manufacturing Warehouse

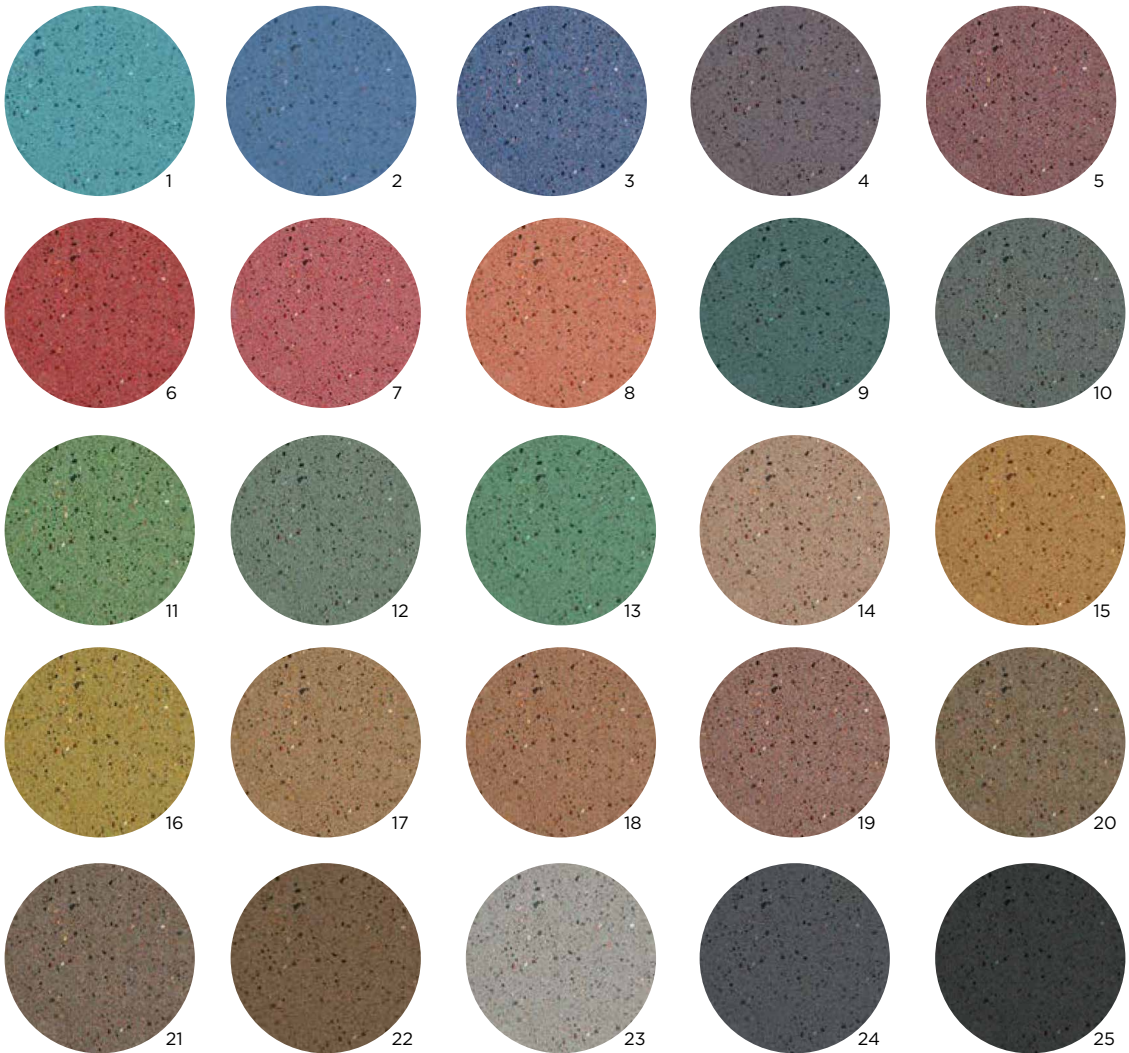
A precision CNC fabricator had 25,500 square feet of concrete that needed polishing for their new manufacturing warehouse. We installed a StrongTread Classic system and filled 4,720 linear feet of control joints. We applied a black penetrating dye to create a long-lasting, durable color treatment.

Specifications

StrongTread Classic Polish
Midnight Black Dye
Black Fox Joint Fill
Black Epoxy Concrete Column Pads

Penetrating Concrete Dyes

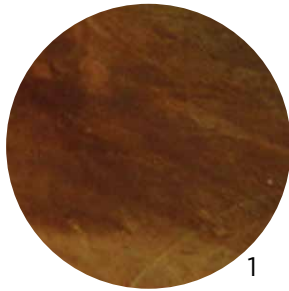
A penetrating concrete dye can be used on indoor concrete polishing or sealing applications. This dye penetrates deep into porous concrete surfaces, creating a long-lasting, durable color treatment for interior concrete floors. Depending on the concrete substrate, this translucent coloring system will have variations. The penetrating concrete dye is the most economic coloring solution.



1 Caribbean Blue • 2 Ocean Blue • 3 Amethyst • 4 Painted Desert • 5 Red Rock • 6 Ruby Red • 7 Rose Quartz • 8 Georgia Clay
9 Blue Stone • 10 Welsh State • 11 Emerald • 12 Serpentine • 13 Copper Patina • 14 Mocha • 15 Amber • 16 Desert Sand •
17 Bronze • 18 Antique Cork • 19 Brown Stone • 20 Light Roast • 21 Espresso • 22 Dark Brown • 23 Concrete Gray • 24 Black •
25 Onyx

Reactive Concrete Stains

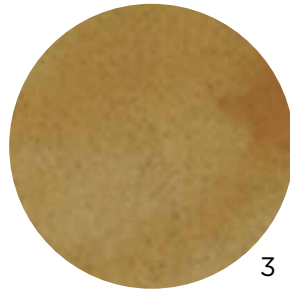
Reactive concrete stains work with the existing chemical makeup of concrete to produce variegated coloring throughout the surface. This coloring method provides permanent coloring to the floor surface, and typically produces a marbled appearance.



1



2



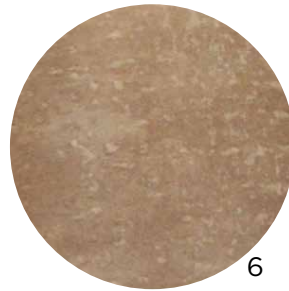
3



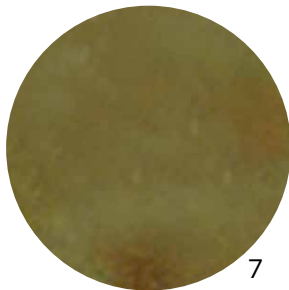
4



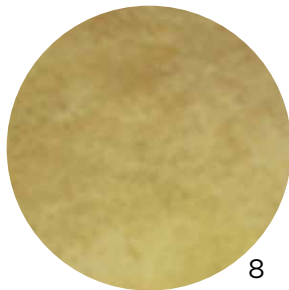
5



6



7



8



9

1 Gold • 2 Azure Blue • 3 Malayan Bluff • 4 Mesquite • 5 Wedge Wood • 6 Soft Maple • 7 Shifting Sand • 8 Desert Amber • 9 Coffee Brown

StrongTread Cure sealing system incorporates premium concrete densifiers used during the concrete placement process. This is the most affordable concrete sealing system with better long-term durability than traditional acrylic curing compounds or concrete sealers. This system is popular in storage facilities and large manufacturing spaces.

| | |
|-----------------|-------|
| FINISHES | Honed |
|-----------------|-------|

| |
|--|
| USES Cold Storage, Warehousing, Manufacturing |
|--|

| |
|--|
| *Only available on new concrete placements |
|--|



StrongTread Hardwear sealing system incorporates the same penetrating products used in a fully polished concrete process. Fully penetrating concrete densification and stain guard products make this a good fit where abrasion resistance, easy cleaning, and a sealed concrete floor that hardens over time is required. This is a less intensive option for larger spaces and where affordability is of key importance.

FINISHES Subtle Sheen

USES

Agriculture, Storage, Municipalities,
Judicial, Warehouses



NAPANEE FARM

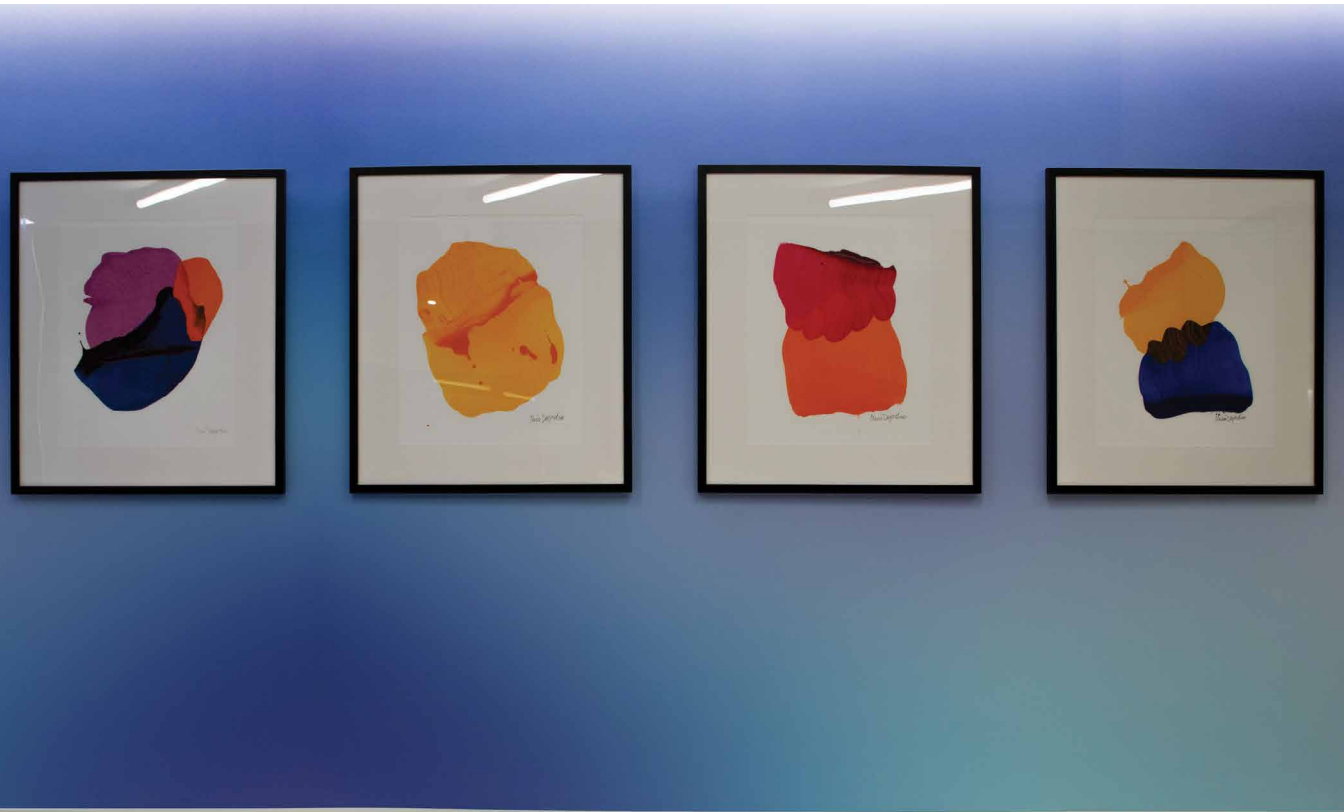
STRONGTREAD

SAVER

StrongTread Saver is an affordable sealed concrete system that uses penetrating sealers and stain guards to protect the finished floor and leave a long-lasting impression. This system provides a more durable finish than traditional acrylic concrete sealers, as the products we use penetrate the concrete and harden over time to make the floor abrasion resistant and easy to clean.

| | |
|-----------------|--------------|
| FINISHES | Subtle Sheen |
|-----------------|--------------|

| |
|--|
| USES Storage, Retail, Municipality, Offices |
|--|



| |
|-----------------|
| CARR WORKPLACES |
|-----------------|



Project Highlight

Carr Workplaces

Carr Workplaces renovated one of the original buildings on the Electric Works campus in downtown Fort Wayne to be a co-working space with open work areas, 85 private offices, and 3 meeting rooms. We installed our StrongTread Saver flooring system on over 14,000 square feet of Carr's space.

Specifications

StrongTread Saver
Subtle Sheen
Natural



BEST ONE



PRIVATE RESIDENCE

SURFACE

.....

Surface by Dancer Concrete Design is a brand of overlays used as a topping on sound and solid concrete surfaces. Our resurfacing process allows us to bring a new look to a space, without the hassle of a complete rip out and replacement. The new surface is durable, strong, and great for remodeling projects where polished concrete is desired but the existing substrate is in less than desirable condition.

SURFACE POLISH

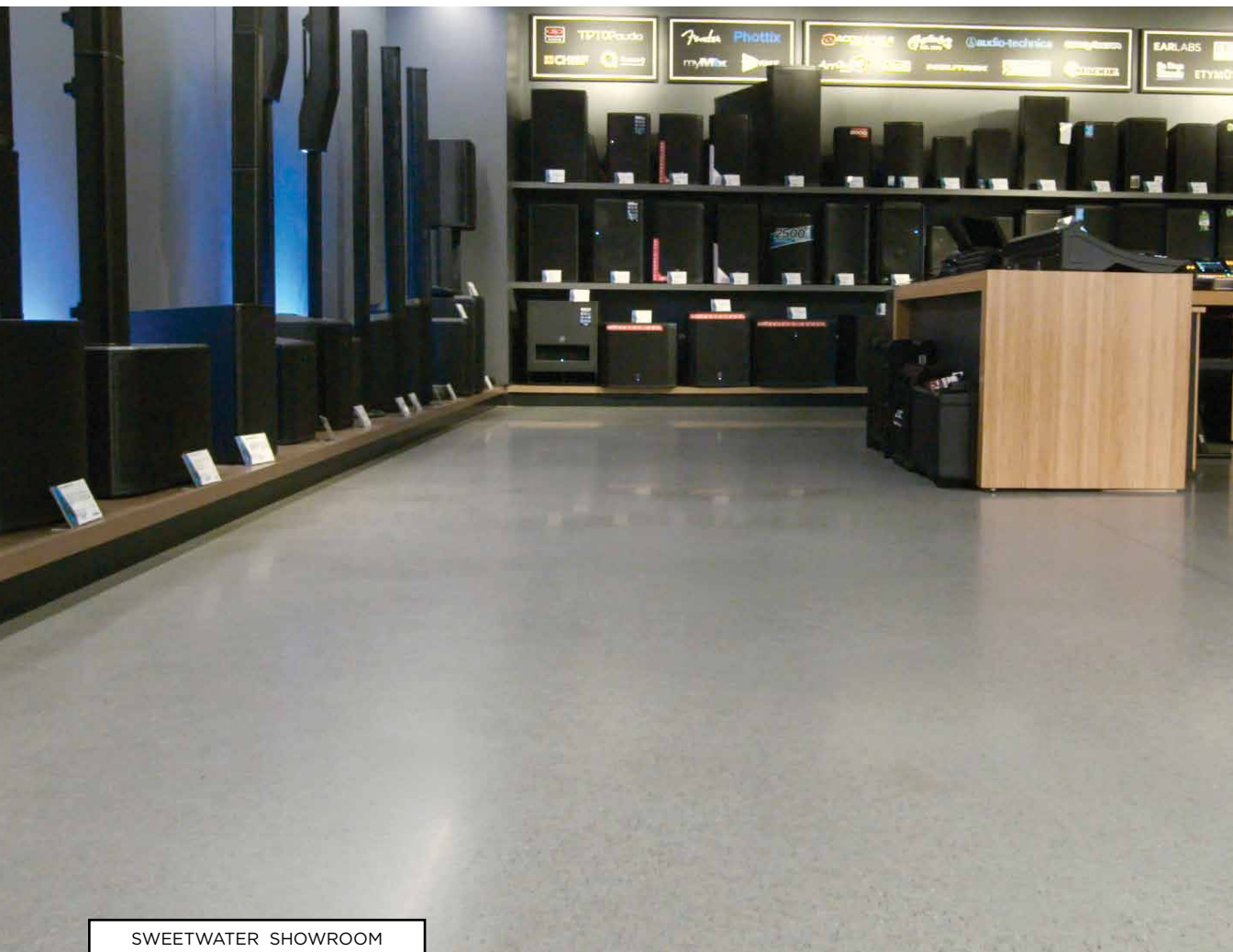
Surface Polish is a concrete overlay that resembles classic salt-and-pepper polished concrete. This overlay is finished and polished much like a traditional concrete floor, and it can be left natural or colored with dyes or stains. This system is not made for heavy industrial use or vehicle traffic.

FINISHES

TreadWell Clear+
Gloss, Satin, Grip
StrongTread Polish
Matte, Satin, High Sheen,
Super Sheen

USES

Retail, Residential, Corridors, Schools



SWEETWATER SHOWROOM

SURFACE SMOOTH

Surface Smooth is a cream finished overlay for vertical surfaces. It provides a soft, rich texture and finish similar to a brand new concrete pour. This overlay has the option to be colored with dyes or stains and is finished with TreadWell Clear+ finish. This system is not made for heavy industrial use or vehicle traffic.

| | |
|-----------------|----------------------------------|
| FINISHES | TreadWell Clear+ Gloss, Satin |
|-----------------|----------------------------------|

| | |
|-------------|---------------------|
| USES | Retail, Residential |
|-------------|---------------------|



PRIVATE RESIDENCE

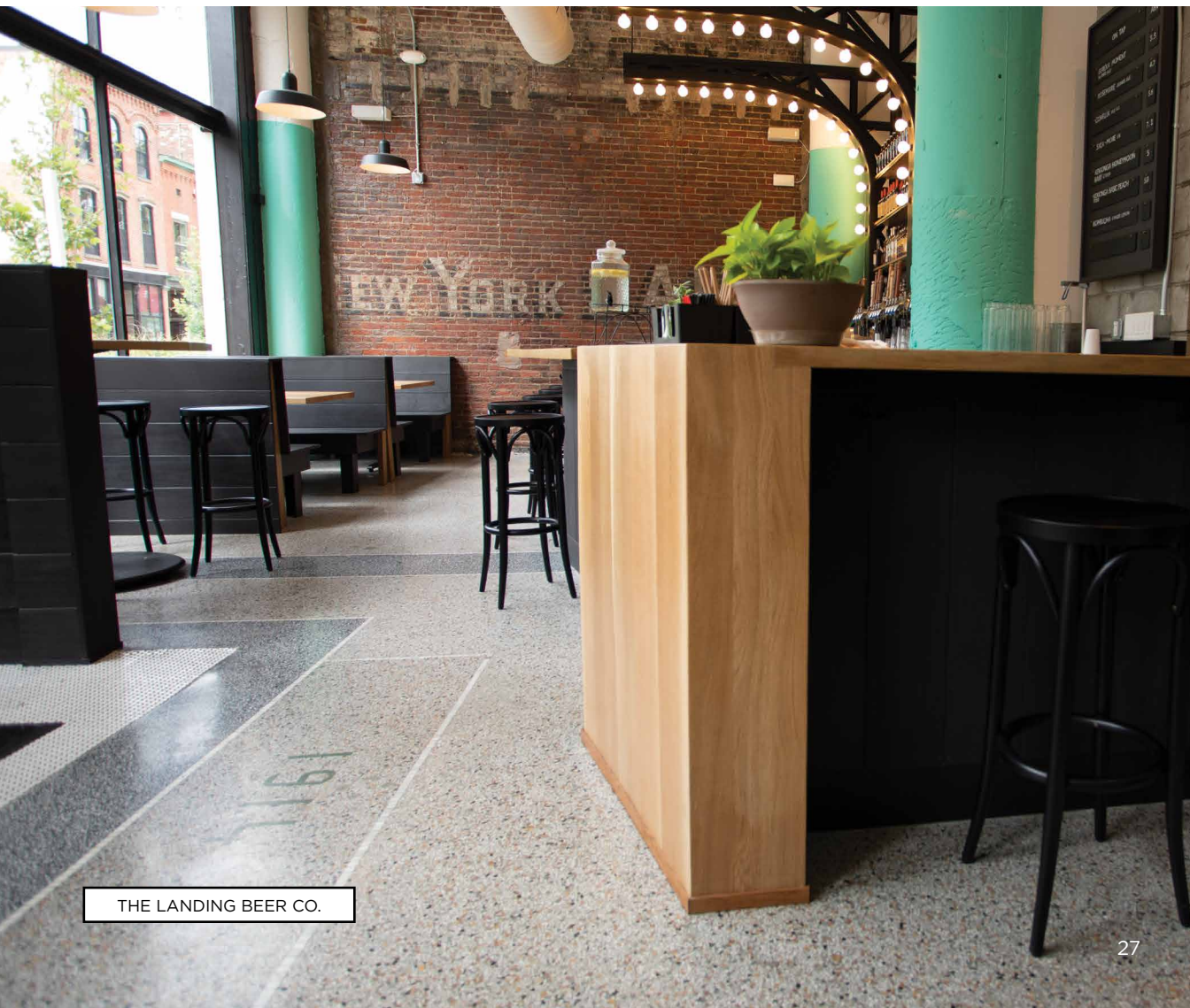
SURFACE TERRAZZO

Surface Terrazzo is based on the old world Italian flooring installation of marble chips or broken stones and glass mixed with an epoxy binder to create an endless array of patterns, colors, and finishes. The terrazzo topping is a 1/4" system that can be installed with new concrete. Also, older terrazzo floors can be refinished with our StrongTread Polish floor system.

FINISHES StrongTread Polish

USES

Airports, Schools, Corridors, Hospitals



THE LANDING BEER CO.



TWO-EE'S WINERY

TREADWELL

.....

Epoxy floor coatings outperform other hard-surface flooring choices in environments that receive the most wear and tear. With this style of flooring, there doesn't have to be any compromising. Durability, safety, aesthetics, and simple maintenance are all aspects that epoxy floor coatings deliver to your environment. Choose between several finish options that fit your situation - smooth, flake broadcast, sand broadcast, metallic, or urethane mortar. Invent your space the way you envision it with multiple design options.



Project Highlight

Van Wert County Humane Society





Van Wert County Humane Society built a new building for their shelter and adoption center. We installed 2,244 square feet of epoxy in ten rooms with an integral epoxy cove; this included a custom step-up dog bath bay in one of the rooms. This was a week and a half installation, and after a twenty-four hour curing period, the Humane Society was able to move in straight away.

Specifications

TreadWell Decorative Chip
Madras Color Blend
¼" Flake

SELECTING THE RIGHT SYSTEM

Understanding the difference between epoxy options

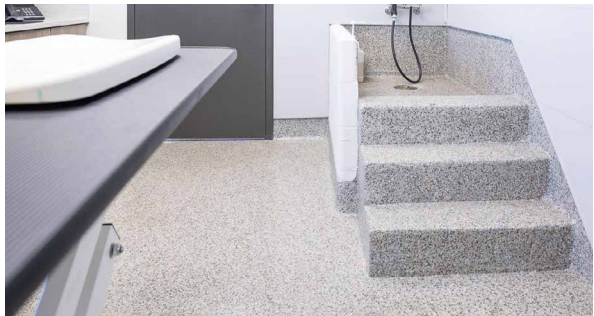
| | |  |  |  |  |
|------------|-------------------|---|---|---|---|
| | TREADWELL | Cost | Maintenance | Impact Resistance | Thermal Shock |
| SOLID | Clear+ | ● | ● | ● | |
| | Color+ | ● | ● | ● | |
| | Industrial+ | ● ● | ● | ● ● | |
| | ESD | ● ● ● | ● | ● ● ● | |
| | Traffic | ● ● ● | ● | ● ● ● | |
| | Urethane Mortar | ● ● ● | ● | ● ● ● ● | ● |
| DECORATIVE | Decorative Chip | ● ● | ● | ● ● | |
| | Flex | ● ● ● | ● | ● ● ● | |
| | Decorative Quartz | ● ● ● | ● | ● ● ● ● | |
| | Metallic+ | ● ● ● | ● | ● ● | |

● Mop ● Broom/Squeegee

EPOXY OPTIONS

INTEGRAL COVE

In kitchens, restrooms, and other wet areas, integral cove provides seamlessness between the floor and wall. This prevents mold and mildew from growing behind the base and allows for simple maintenance, such as hosing down a room. Integral Cove is available in several different heights.



URETHANE TOPCOAT

Our 3-part high performance urethane topcoat increases the abrasion resistance and chemical resistance of your resinous flooring system. This can withstand up to 3 times more wear than traditional topcoats. The additional topcoat also increases the UV resistance of the resinous flooring system.



TREADWELL

CLEAR+

TreadWell Clear+ is a light duty flooring system, designed for wet areas with stain and water resistance. It is an affordable hybrid sealing system that provides the look of polished concrete with the topical advantages of epoxies and urethanes.

FINISHES Gloss, Satin, Grip

USES

Light Duty Kitchens, Restrooms, Cafeterias, Theaters, Wet Areas



JEFFERY. BENJAMIN. HAIR

TreadWell Color+ is a light duty flooring system, designed for foot and rubber-wheeled traffic. It is an affordable, 3 layer, water-based, solid color epoxy and urethane system.

GREAT FOR

Foot Traffic, Break Rooms, Storage, AV Closets, Park Buildings, Small Warehousing

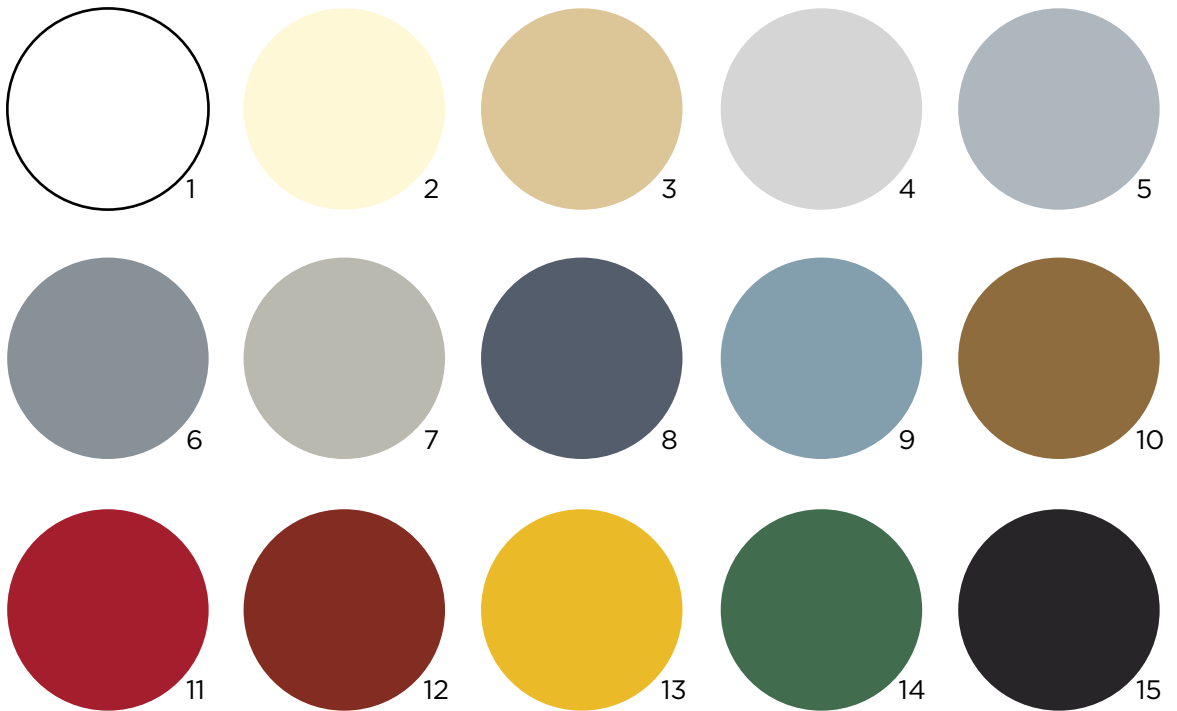


ANDREASEN CENTER FOR WELLNESS

Solid Colors

Coordinate your branding with your interior space by selecting one of our solid epoxy colors.

Note: Colors may be affected by age, heat, and exposure to sunlight. Opacity can vary between products. Please request an actual color sample of the system that you're considering to confirm the most accurate representation.



1 White • 2 Ivory • 3 Beige • 4 Light Grey • 5 Medium Grey • 6 Slate Grey • 7 Concrete Grey • 8 Charcoal • 9 Smoke Blue • 10 Caramel • 11 Safety Red • 12 Tile Red • 13 Safety Yellow • 14 Green • 15 Black

TREADWELL

INDUSTRIAL+

TreadWell Industrial+ is a medium duty flooring system, designed for commercial and industrial settings. It is an affordable, solid color epoxy system that provides a durable and seamless floor.

GREAT FOR

Recreational Rooms, Break Rooms,
Industrial Applications, Locker Rooms,
Manufacturing Facilities, Animal Caging,
Commercial Spaces

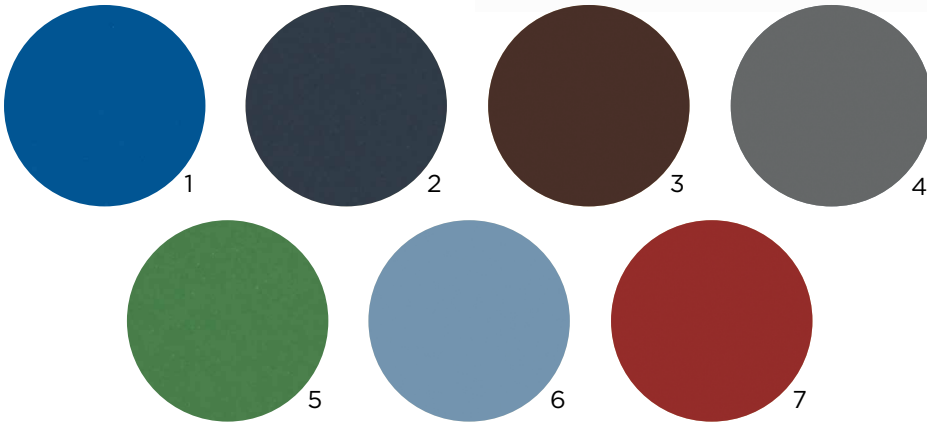


WAWASEE HIGH SCHOOL

TreadWell Urethane Mortar is a heavy duty flooring system, designed for the most abusive settings. It is a solid color urethane mortar system that provides the highest level of impact and chemical resistance, as well as performance in extreme temperatures. Unlike other systems, it can be installed on "green" concrete without priming, offering quicker installation.

GREAT FOR

Food Grade Facilities,
Industrial/Commercial Kitchens,
Heavy Duty Manufacturing,
Breweries, Areas of Thermal Shock



1 Blue • 2 Charcoal • 3 Chestnut • 4 Dark Grey • 5 Green • 6 Grey • 7 Red

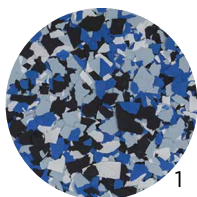


DOT AND LINE

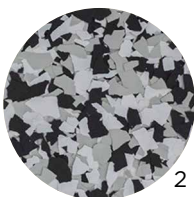
TreadWell Decorative Chip is a medium duty flooring system, designed for commercial and retail settings. It is an epoxy system that incorporates a vinyl chip broadcast to create a durable and seamless floor. This system provides slip and stain resistance, durability, and countless color combinations.

GREAT FOR

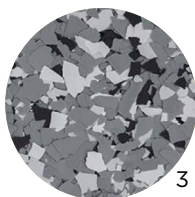
Garages, Recreational Rooms,
Prep Kitchens, Industrial Applications,
Break Rooms, Locker Rooms,
Commercial/Retail Spaces



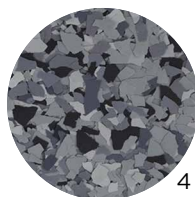
1



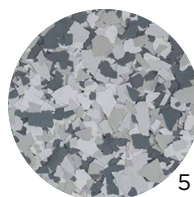
2



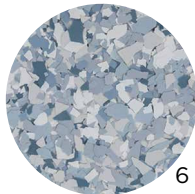
3



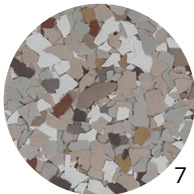
4



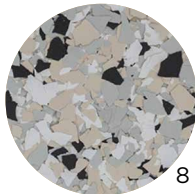
5



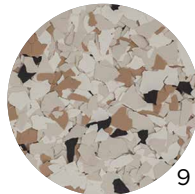
6



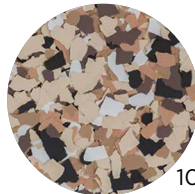
7



8



9



10

1 Orbit • 2 Domino • 3 Wombat • 4 Nightfall • 5 Gravel • 6 Tidal Wave • 7 Creekbed • 8 Cabin Fever • 9 Shoreline • 10 Outback



ALTOGRADOPIZZA

TreadWell Decorative Quartz is a medium duty flooring system, designed for commercial and industrial settings requiring a high-end aesthetic. It is an epoxy system that incorporates a broadcast quartz coating to be a durable and seamless floor. This system provides slip and stain resistance, durability, and countless color combinations.

GREAT FOR

Commercial/Industrial Kitchens,
Locker Rooms, Walkways,
Wet Areas, Showrooms,
Multi-Purpose Spaces

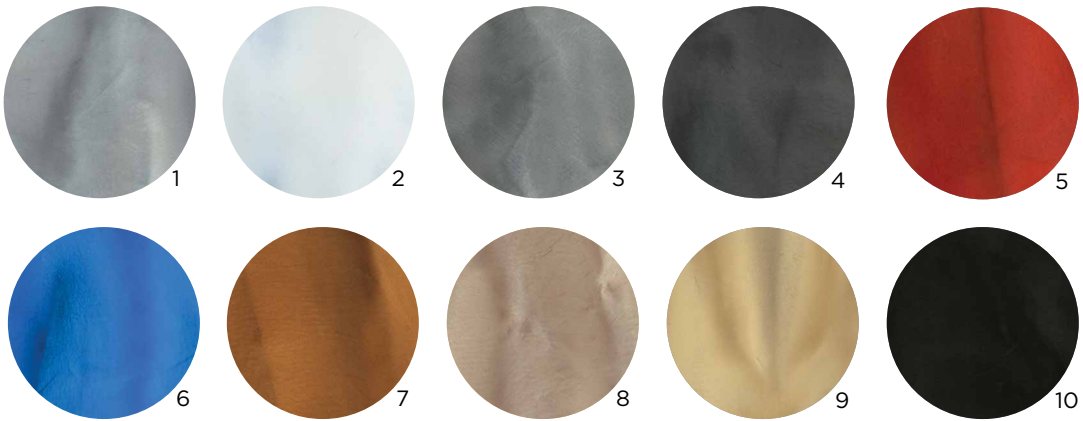


1 Marina • 2 Crystal • 3 Quicksand • 4 Matrix • 5 Dalmatian • 6 Eclipse • 7 Twilight • 8 Biscuit • 9 Davenport • 10 Ruby

TreadWell Metallic+ is a light duty flooring system, designed for commercial and retail settings requiring a one-of-a-kind finish. It is an epoxy system that incorporates metallic pigments held in a suspension of resins, creating a sense of depth and movement in the floor. The high sheen of the metallic pigments combined with endless color combinations provide a completely unique finish.

GREAT FOR

Commercial/Retail Spaces, Restrooms, Showrooms, Residential Basements, Waiting Rooms



1 Dolphin • 2 Pearl • 3 Manatee • 4 Whale • 5 Americana • 6 Maui • 7 Rum • 8 Guava • 9 Sandbar • 10 Caviar



DAVE'S HOT CHICKEN

WHY DCD?



BEST WORK

WE'VE CHOSEN JUST A FEW THINGS TO BE MASTERS IN TO MAKE SURE YOU GET THE BEST WORK:
ERROR-FREE, ON-TIME, EVERY-TIME



DESIGN DRIVEN

THE RIGHT SOLUTIONS, DURABILITY, AND SAFETY FOR YOUR SPACE.
THE RIGHT PRICE FOR YOUR BUDGET.



STRONG & STEADY

TRAINED INSTALLERS AND THE RIGHT SPECIALIZED EQUIPMENT GIVE YOU THE QUICKEST INSTALLATION WITH THE LEAST DISRUPTIONS.

VISION

It's the future we are working towards. It's the guiding light of the kind of business we want to be.

Our **VISION** is growing young leaders who run the best small business — and inspiring others to do the same.

DRIVING FORCE

It's WHY we do what we do. It's the **PURPOSE** we have beyond our day to day work. It's the **IMPACT** we want to have in the community where we live and work.

Our **DRIVING FORCE** is Growing Leaders who deliver Best Work.

CORE VALUES

CORE VALUES define how we behave. These are behaviors we can count on from one another and our customers can expect to see in action from working with us.

We are:

STRONG AND STEADY

We find a flow in what we take on. We are known for our hard-work ethic, problem-solving skills, and positive attitude.

NEAT, CLEAN, AND ORGANIZED

A sense of order is not just for good looks. We believe it supports the flow, drives creativity, and helps deliver the best work.

MORE THAN ONE

We set aside the pursuit of me to first serve the mission and the Team.

ALWAYS GROWING

We grow by leaning just beyond our security and comfort. It is our duty to expand upon what we have been given.

THOUGHTFUL COMMUNICATORS

We are intentional in how we speak and listen. We communicate what is kind, necessary, and true.

WHAT OUR CUSTOMERS HAVE TO SAY



We loved working with Dancer Concrete. There's no question that at the top of their priority list is great quality and great customer care. I would highly recommend Dancer Concrete for your next concrete flooring project!

K PAUL MAUER - AVALON CHURCH



With the same mindset as Dancer Concrete, we take great pride in taking care of our students, staff, and building. We were pleased to partner with them to take our music and art room hallway to the next level. The crew worked with us to create a unique line that included various designs and multiple colors. We appreciate their attention to detail and willingness to create the feature that is used to enhance our students experience with art.

JAMI CRAFT - ROANOKE ELEMENTARY PRINCIPAL



From start to finish, the DCD team was professional, timely, and produced high quality work. Hands down the best experience with any company in this industry. We are excited to use them again for our next project!

CELESTE SEXTON - FUSION YOGA



WORK HERE

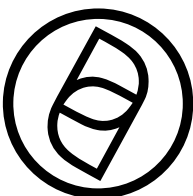
We are a growing, family-owned and operated contracting company. We specialize in polished concrete, terrazzo, and epoxy coatings for the best commercial construction projects, industrial environments, and high-end residential homes. We do not pour concrete, and our work is done inside year-round.

Our local-based model allows us to be home most nights with our family. We currently operate in Fort Wayne and South Bend. We have grown because we hire and retain people who value hard work, problem-solving skills, and a positive attitude.

DRIVING FORCE. We believe we have been called by a Creator to build the best small business that grows young leaders to deliver the **BEST WORK**. This is the Driving Force behind everything we do. This is how we make a difference.

As we grow our team, we are seeking people who want to be challenged and grow personally. We want team members who believe that by growing personally, they are better able to serve others.

The Best Small Business Benefits; 60% employer paid health insurance, 7 paid holidays, 2-3 weeks of vacation with personal days, \$250 yearly clothing allowance, up to 4% 401k match, bonuses, progressive promotion opportunities, paid leadership training, payouts for reading books, and the opportunity to work within a local, family-owned and operated business.



We want the best for you, so we operate in a drug-free and smoke-free environment. If you like getting dirty and sweaty, have a valid driver's license, and the availability for a small amount of travel (only 12-15 nights per year), if you have the drive and think THIS is the right place for you, let's chat. Nick's Phone: 260-415-1951

Meet The Team



Nick Dancer
President



Alexis Dancer
Design



Jacob Janssens
Senior Project Leader



Nathan Heintzman
Project Leader



Noah Bollenbacher
Project Coordinator



Ben Doege
Field Operations Coordinator



Dennis Barylski
Business Manager



Megan Sheetz
Creative Assistant



Josh Paden
Shop Leader



Joel Janssens
Field Operations Leader



Ben Reuille
Team Leader



Anthony Barns
Team Leader



Matt Dunno
Team Leader



Ashton Barnes
Team Leader



Sam Albert
Team Leader



Scott Bailey
Craftsman



Jared Huges
Craftsman



Isiah Bollenbacher
Craftsman



Robert Karn
Craftsman



Ian Campbell
Craftsman

Meet The Team



Brandon Coe
Craftsman



Adam McDowell
Craftsman



Daniel Rohrbach
Craftsman



José Ramirez
Craftsman



Nico Lopez
Craftsman



Benji Lopez
Craftsman



Tony Garza
Craftsman



Danny Vazquez
Craftsman



Josh Smith
Craftsman



Jony Rivera
Craftsman



Marshall Aspy
CAST Craftsman



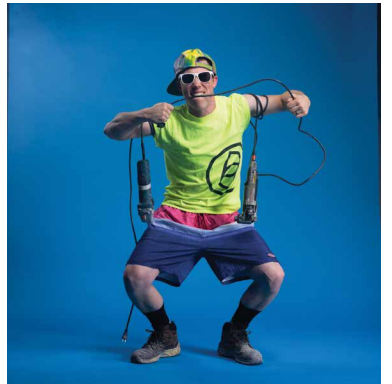
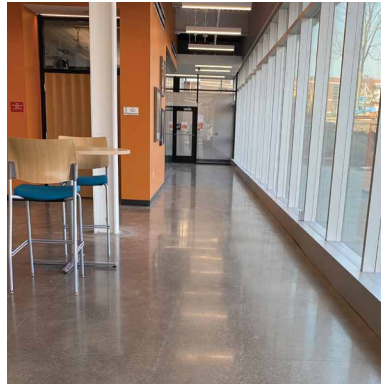
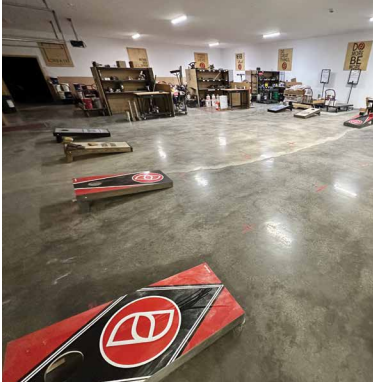
Jim Garza
CAST Craftsman



Clark Dancer
Apprentice



WORK HERE



Find us everywhere @dancerconcretedesign for the latest project photos, videos, and team highlights.



CONTINUING EDUCATION WITH DCD



Attend an AIA accredited Lunch and Learn hosted by Dancer Concrete Design at your office location or our Fort Wayne Shop.

Polished Concrete, Terrazzo, and Epoxy Coatings — are they right for your project?

Dancer Concrete Design is an installer and specifier of polished concrete, terrazzo, and epoxy coatings for spaces such as restaurants/ food and beverage, retail, education, manufacturing, and warehousing.

Polished concrete, terrazzo, and epoxy coatings can produce some of the most durable finished floors. But is it right for your project?

Join us for a one hour AIA accredited Lunch and Learn presentation with Dancer Concrete Design to explore:

- The process of polished concrete floors, terrazzo, and various epoxy floor coatings.
- How to budget for a variety of finishes and design considerations.
- How workflow processes through DCD to ensure end clients get BEST WORK.
- Long-term use and maintenance for polished concrete, terrazzo, and epoxy floors.

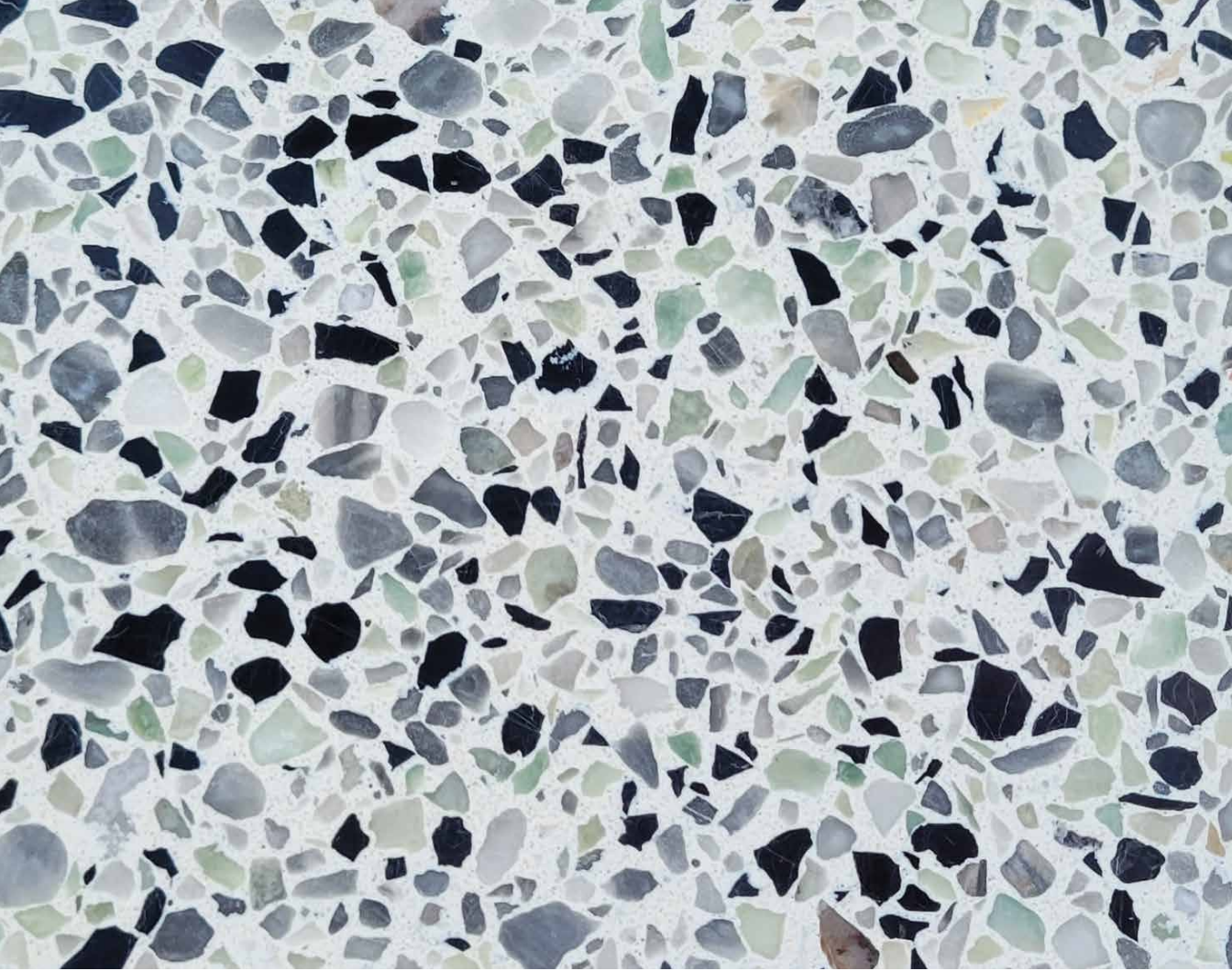
After a 45-minute presentation and 15-minute Q&A, participants will be able to:

- Describe the sealing and polishing process for polished concrete finishes.
- Identify BEST WORK when assessing the finished installation of polished concrete, terrazzo, and epoxy coating installations.
- Explain the differences when polished concrete, terrazzo, and epoxy coatings are best specified for each type of space.
- Discuss the long-term cost savings of polished concrete, terrazzo and epoxy floors compared to other floor materials.



Reach Out to Schedule

Nick Dancer
260-415-1951
nickdancer@dancerconcrete.com



CAST

.....

CAST is our line of commercial architectural cast terrazzo and concrete pieces. This includes steps, base, tiles, wall panels, and furniture.



STEP TREADS

Step treads open up your space with their self-supporting, floating design. Internal metal supports allow the step treads to span unsupported between stringers. Treads edges can be finished to be installed on an open or closed carriage, depending on your project.



TREAD RISER COMBOS

Tread riser combos give a seamless look to your stair design. Cast in the shape of an “L,” the combo eliminates any gap between the outward lip of the stair tread and riser. Our tread riser is installed over a fully supported base.

NOSING STRIPS

Abrasive nosing strips add a non-slip grip to the key traffic areas of your pre-cast steps. Strips can be installed in different thicknesses and groupings for function and aesthetic purposes and often span between 75% and 100% of the width of the tread.

EXOTIC BLENDS

Introducing glass, mirror, and mother-of-pearl brings an upgraded surface to your terrazzo surfaces. Any of these options are blended into the terrazzo aggregate base during the casting process.

INDUSTRIAL



MACH MEDICAL

LANE STRIPING

Lane striping offers the ability to direct vehicle and pedestrian traffic flow for safe and clean working environments.



JOINT REBUILDING

An unlevel joint can cause damage to forklifts, product, and operators. Our joint rebuilding process repairs the joint to provide a smooth, level, and long-term flat solution in the most rigorous environments.



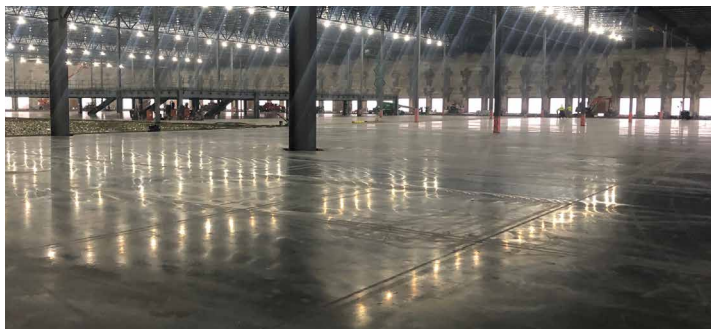
SURFACE PREP

Our hourly, daily, and weekly grinding options come as a complete package of operator, grinder, and vacuum equipment. With these, we can level, smooth out, or rough up a surface. We have the ability to mobilize quickly and take care of problem spots when they arise.



CONCRETE SEALING

A variety of sealing treatments are available for all sizes and applications. From small mechanical rooms to full-size warehouses, we install the concrete sealers that are purposely chosen to increase the longevity of the slab and address any space-specific use. Additionally, the sealers help to mitigate dust.





SERVICE AREA

Working with forward-thinking clients who seek the best in design, durability, and value. We work with clients with about an hour's drive from Fort Wayne and South Bend.

**FORT WAYNE &
SOUTH BEND, INDIANA**

POLISHED CONCRETE

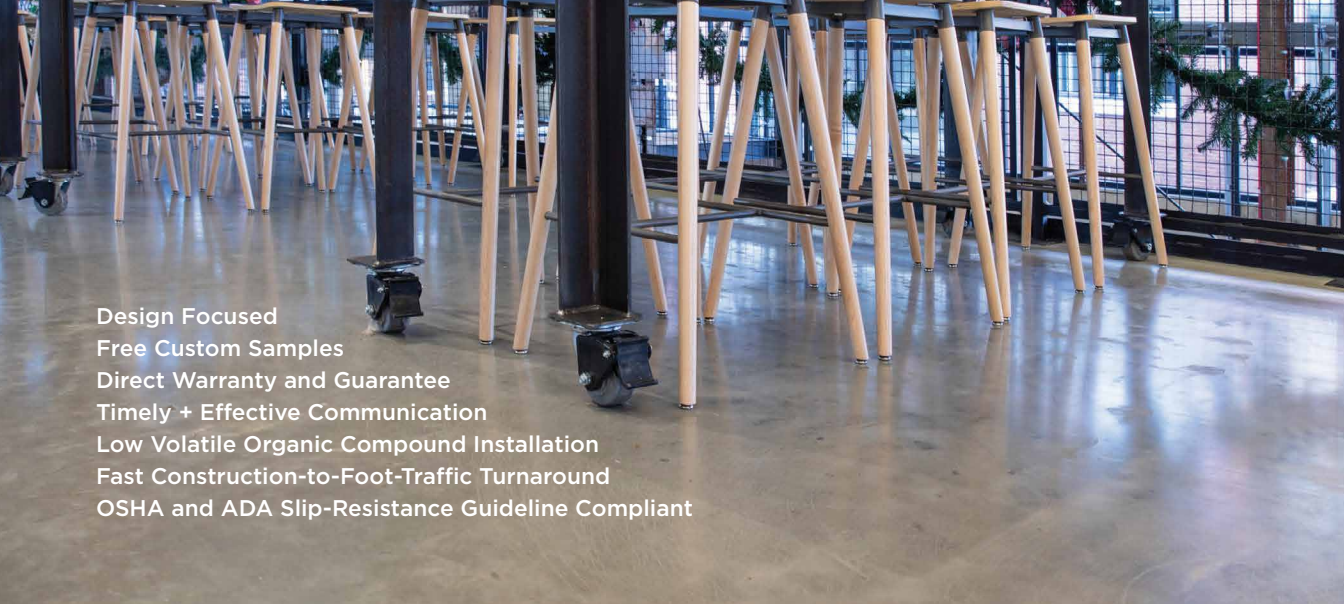
EPOXY COATINGS

TERRAZZO

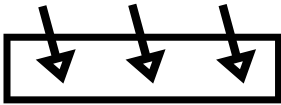
DANCER CONCRETE DESIGN WARRANTY

2 year all-inclusive material and labor warranty on all installs and upgrades for certain systems up to 5 years.





Design Focused
Free Custom Samples
Direct Warranty and Guarantee
Timely + Effective Communication
Low Volatile Organic Compound Installation
Fast Construction-to-Foot-Traffic Turnaround
OSHA and ADA Slip-Resistance Guideline Compliant



POLISHED CONCRETE



EPOXY COATINGS



TERRAZZO

For New Projects Contact:



JACOB JANSSENS
PROJECT LEADER

260-442-5227
jacobjanssens@dancerconcrete.com



NATHAN HEINTZMAN
PROJECT LEADER

260-452-0736
nathanheintzman@dancerconcrete.com



Dancer Concrete Design
4411 Engle Ridge Dr. Fort Wayne, IN 46804
260-748-2252 | create@dancerconcrete.com
dancerconcrete.com