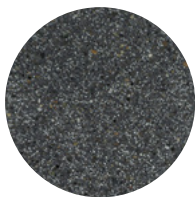


PENETRATING CONCRETE DYES

A penetrating concrete dye can be used on indoor concrete polishing or sealing applications. This dye penetrates deep into porous concrete surfaces, creating a long-lasting, durable color treatment for interior concrete floors. Depending on the concrete substrate, this translucent coloring system can have variations. Penetrating concrete dye is our most economic coloring solution.



Black



Burnt Sienna



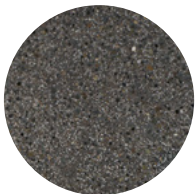
Carmel



Chestnut



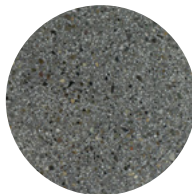
Chocolate Brown



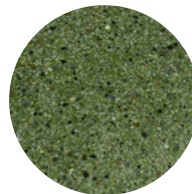
Eggplant



Forest Green



Gray



Green



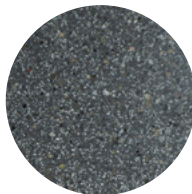
Gold



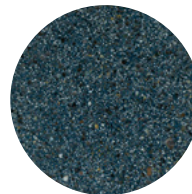
Mahogany



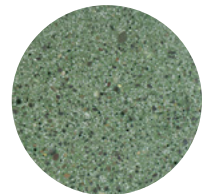
Maroon



Midnight Black



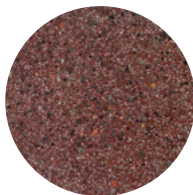
Patriot Blue



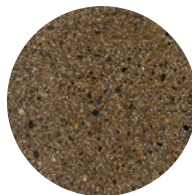
Pine Green



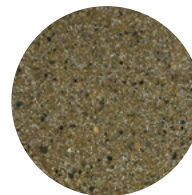
Raw Sienna



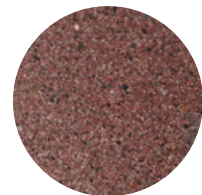
Red



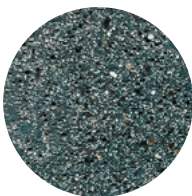
Saddle Brown



Sand



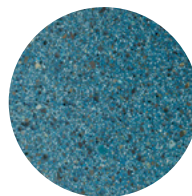
Sepia



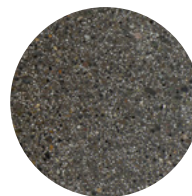
Slate Blue



Terra Cotta



Turquoise



Walnut