

•ISSUE•
2020

THE PROCESS

DANCER CONCRETE DESIGN



A Note from the Founder

“When Dancer Concrete Design first began, we focused on bringing concrete design into interior spaces through architectural elements tailored to the needs of our customers. Until we discovered the possibilities flooring had to offer, this was our model. Over time, we learned to appreciate how much a floor could simply become a subtle backdrop within a space, or completely transform an entire room. To transform interiors, we found a better solution; truly handcrafted flooring that offers a versatile way to stylize spaces and add design features to spark conversation while using materials that are sustainable, natural, and long-lasting.

Nearly 12 years ago, my first hand-grinder was put on a concrete surface. Since then, our goal has been to add value to our customers’ lives and spaces by approaching our work with a servant’s heart. We believe construction done well does not have to come with the typical “contractor experience.” Our style of business attracts customers who value open communication, workmanship, and great design. As we grow, our dedication to creating an exceptional experience for our clients is unwavering. We continue to foster this belief by cultivating a caring team and always remembering to love what we do.”

Nick Dancer

Founder + Owner, Dancer Concrete Design

Contents

Contributors.....	3
The Dancer Values.....	4
2020 Theme.....	5
Polished Concrete Process.....	6
Club Room Customer Story.....	7
StrongTread.....	9
StrongTread Polish Systems.....	11
SealCraft.....	15
Surface.....	17
The Pour.....	19
Stain or Dye.....	20
Concrete Dye Colors.....	21
Concrete Stain Colors.....	22
Shindigz Customer Story.....	23
Team Member Spotlight.....	27
Slip Resistance of Concrete.....	28
Play.....	29
Work Here.....	30
Meet the Team.....	31
Before We Start.....	32
Treadwell.....	33
Epoxy Options.....	34
Color +.....	35
Industrial + and Shop.....	36
Urethane Mortar.....	37
Decorative Chip.....	39
Quartz.....	41
Metallic.....	44
Northrop Customer Story.....	45
Moisture in Concrete.....	47
Industrial Systems.....	48
Service Area.....	49
Capabilities + Warranty.....	50



CONTRIBUTERS



Nicholas + Alexis Dancer

Nick and Alexis Dancer own and operate Dancer Concrete Design. They live in Fort Wayne with their 3 children, Clark, Charlie, and Clyde. They love walking around the neighborhood, playing at home, and creating adventures wherever they go.



Nicolle Ginter

Nicolle Ginter owns and operates VimAnnVigor Design Studio. She and her husband live in Fort Wayne with their 3 children, Connor, Lillian, and Penelope. She has a love for beautiful design, cooking, baking, reading, and spending quality time with her family.

Photos

Alexis Dancer
Nicholas Dancer
Amy Gerber
Allison Gray
Peter Heneveld
Joshua Ihrle
Nick Morken
Dwell Vacations

Writing + Editing

Alexis Dancer
Nicholas Dancer
Kathleen Welling

Structure + Elements

Alexis Dancer
Nicholas Dancer
Nicolle Ginter
Nick Morken

Design + Layout

Alexis Dancer
Nicolle Ginter - VimAnnVigor Design

Thank you to all those who make this business possible. To the clients who choose to work with us, our vendors, and our team. Without you, none of this is possible, and we are extremely grateful for the opportunity you allow us to have in your projects and lives.

- *Nicholas and Alexis Dancer*

The Process Magazine is an annual publication created by Dancer Concrete in Fort Wayne, Indiana. Reproduction, duplication, distribution, and remix are encouraged provided you give credit to the material source and artists and allow the same conditions to your contributors.

Learn more at dancerconcrete.com

THE DANCER VALUES

WE ARE STRONG & STEADY.

We find a flow in what we take on. We are known for our our problem-solving skills, strong work ethic, and positive attitude.

WE ARE NEAT, CLEAN, AND ORGANIZED.

A sense of order is not just for good looks. We believe it supports the flow, drives creativity, and helps deliver the best product.

WE ARE MORE THAN ONE.

We set aside the pursuit of “me”, to first serve the mission and the team.

WE ARE ALWAYS GROWING.

We grow by leaning just beyond our security and comfort. It is our duty to expand upon what we've been given.

WE ARE THOUGHTFUL COMMUNICATORS.

We are intentional with how we speak and listen. We communicate what is kind, necessary, and true.

WHO

Forward-thinking clients who seek the best in design, durability, and value. Commercial, Custom Residential, and Industrial Spaces.

WHERE

We work within about an hour's drive from our home location in Fort Wayne, Indiana. We are also currently growing our business in the NE Indiana area around South Bend and Goshen.

THE WORK

Rather than be 'kind of good' at a lot of things, we want to be masters in our craft, producing a level of skill that serves the work and our clients the best. So we only do a few things - and learn to do them well.

OUR DAY IN, DAY OUT *What we do.*

We help create the best spaces through modern flooring. Polishing. Staining. Epoxy. Just a few things - with mastery.

DRIVING FORCE *What moves us.*

We believe we are called to build a remarkable business, that drives growth in our team, so our clients can count on us to deliver Best Work. That's how we make a difference and is the driving force behind everything we do.

OUR PURPOSE *Why we do it.*

We believe we have been put on earth by a Creator to...

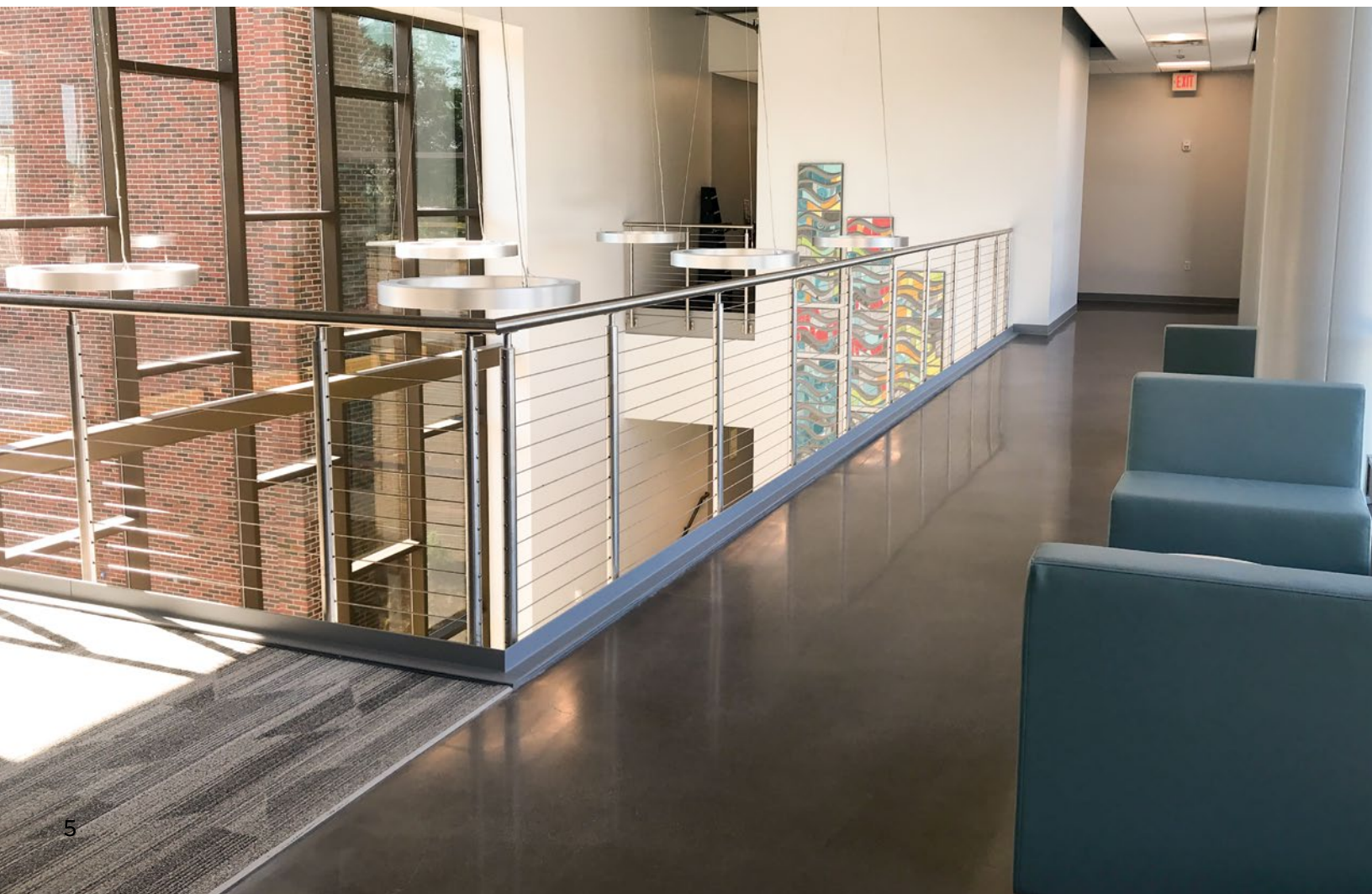
MAKE EVERYTHING WE TOUCH BETTER - PEOPLE AND CONCRETE.

Every year, we host a theme. It's a fun way to bring in a new attitude and thinking process into our company for the year. We celebrate it with handouts, new t-shirts, and signs. It's also our belief that businesses have the opportunity to impact people beyond just the products or services they sell. This is our way to help live our purpose — **Making Everything We Touch Better; People and Concrete.**

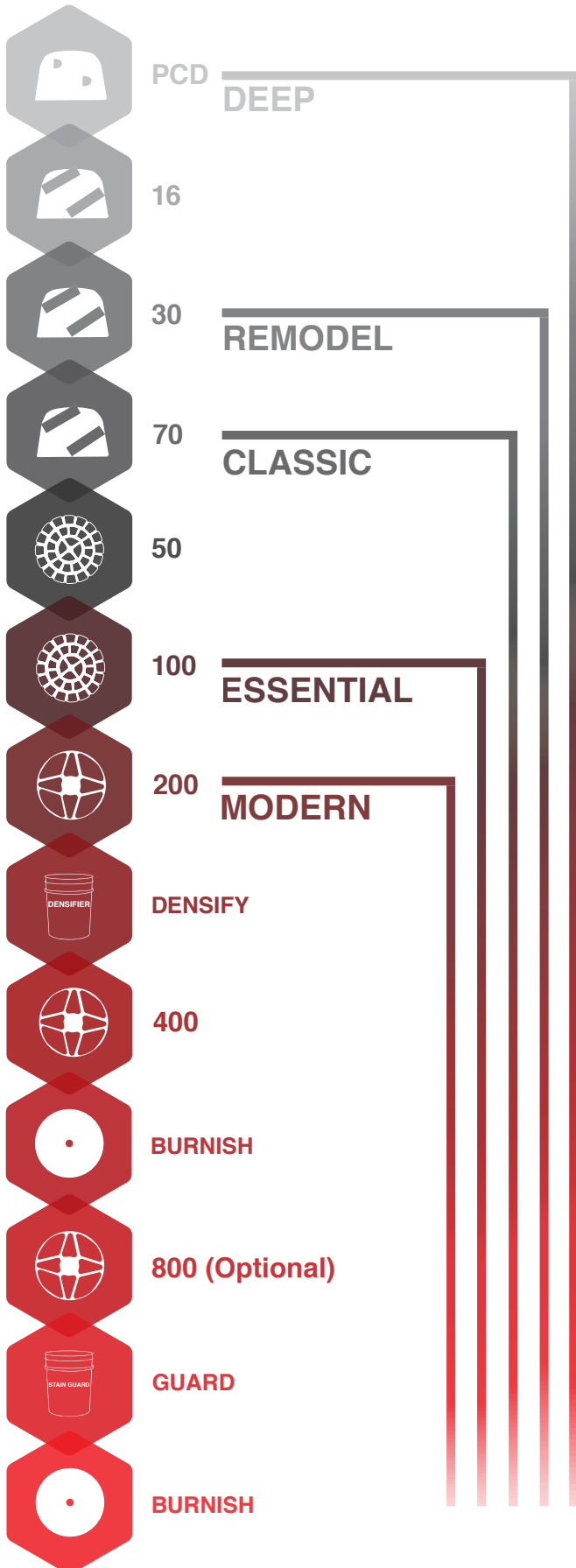
2020 Theme



Everything you need is already inside of you. Work with what you have been given - not wishing for something different, but focusing on what is in front of you. WORK YOUR LAND.



Polished Concrete Process



What is Polished Concrete?

Polished concrete is a floor that has been both mechanically finished through grinding, honing, and polishing with bonded abrasives as well as treated with a penetrating hardener. The concrete densifier/hardener penetrates into the concrete to help harden and dust-proof the surface.

Polished concrete is a sustainable flooring option as it uses an existing structural element of a building for a finished surface. Polished concrete is a “green” flooring system and LEED approved.

There are a variety of custom options available for polished concrete, including: dyes, stains, scoring cuts, decorative engraving, borders, and logos.

Polished concrete offers one of the most economical lifetime costs of any floor.

Limitations: Polished concrete is not recommended for areas with constant water exposure. Sealed or other epoxy options may be a better fit.



**THE
CLUB ROOM**
AT THE CLYDE

A CUSTOMER STORY



The Club Room is Fort Wayne's hot spot for delicious food and exceptional customer service in a musically inspired family-friendly environment. Whether visiting before or after a show at The Clyde or simply stopping in for a quick drink or bite to eat, they hope you find it a welcoming place to gather with friends and family.

Specifications

Location: 46807 Fort Wayne, Indiana

System: StrongTread Remodel Polished Concrete

Contractor: Hagerman Construction



STRONG TREAD

.....

StrongTread by Dancer Concrete Design is a brand of penetrating surface treatments designed for long-term durability and sustainability densifying, hardening, and dust-proofing concrete surfaces.

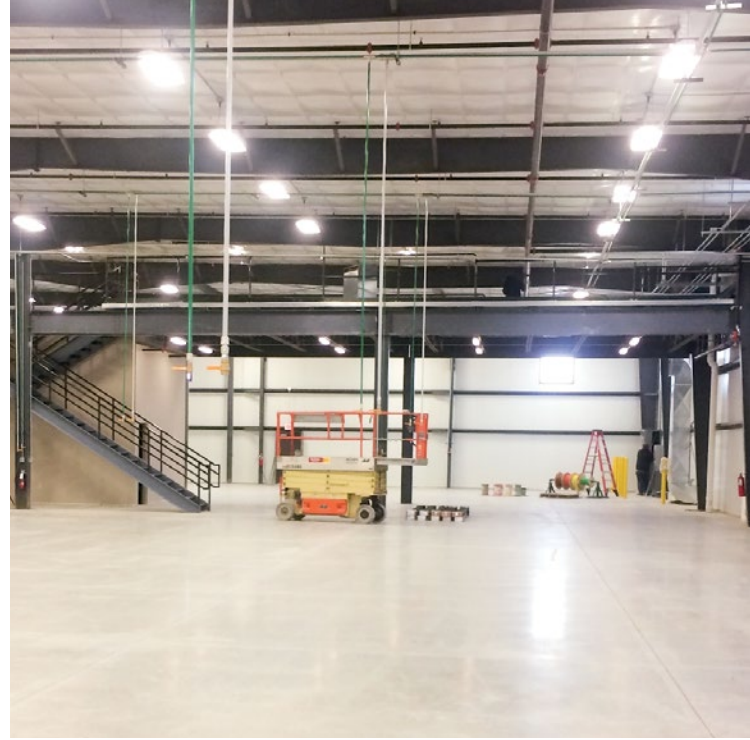
STRONGTREAD CURE

The StrongTread Cure Sealing system incorporates premium concrete densifiers used during the concrete placement process. This is the most affordable concrete sealing system with better long-term durability than traditional acrylic curing compounds or concrete sealers. This system is popular in storage facilities and large manufacturing spaces.

Finishes: Honed

Uses: Cold Storage, warehousing, manufacturing

**Only available on new concrete placements*



STRONGTREAD POLISH

The StrongTread Polished concrete flooring solution is one of the most sustainable flooring solutions available. With a low lifetime cost, simple maintenance, and long-term durability, StrongTread Polished concrete provides great value for anyone looking into hard-surface flooring. With the ability to transform your floor by adding a dye or stain, or simply enhance the natural gray hue of the existing concrete, polished concrete is crafted to fit a variety of environments and styles.

Finishes: Matte, Satin, High Sheen, Super Sheen

Uses: Retail, homes, churches, event venues, corridors, multi-purpose spaces



STRONGTREAD HARDWEAR

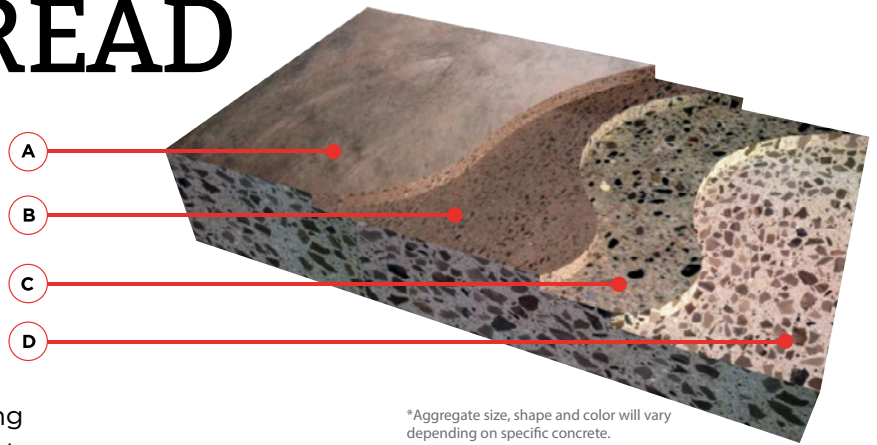
The StrongTread Hardwear Sealing system incorporates the same penetrating products used in a fully polished concrete process. Fully penetrating concrete densification and stain guard products make this a good fit where abrasion resistance, easy cleaning, and a sealed concrete floor that hardens over time is required. This is a less intensive option for larger spaces or where affordability is of key importance.

Finishes: Subtle Sheen

Uses: Agriculture, storage, municipalities, judicial, warehousing



STRONGTREAD POLISH SYSTEMS



Class A

Cream Aggregate: Polished surface resulting in little-to-no aggregate exposure. Some light sand exposure.

Class B

Fine/Sand Aggregate: Removes not more than 1/16" of concrete surface by grinding and polishing. This results in the majority of exposure displaying fine aggregate with little-to-no medium aggregate in random locations. Light aggregate exposure with some cream.

Class C

Mixture/Medium Aggregate: A deeper aggregate exposure with a mixture of light to heavy exposure. Various depths expected on remodel work where glues, adhesives, or other floors have been installed.

Class D

Large Aggregate: Removes not more than 1/4" of concrete surface by grinding and polishing. This results in the majority of exposure displaying large aggregate with little-to-no fine aggregate in random locations. Heavy aggregate exposure with some light sand.

FINISH LEVELS



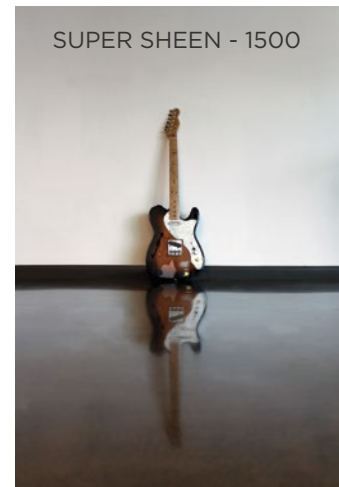
**MATTE FINISH
200 GRIT, LEVEL 0**
Matte Finish polishing produces a concrete floor with a soft, matte finish that is easy to maintain. This option is popular in residential and industrial settings, and is the most economical finish level.



**SATIN FINISH
400 GRIT, LEVEL 1**
Satin Finish polishing produces a diffused reflection and is a popular base level floor finish.



**HIGH SHEEN
800 GRIT, LEVEL 2**
High Sheen polishing produces a sheen on the floor that will clearly reflect identifiable objects. This is a popular flooring option for restaurants, retail facilities, and other areas where a high sheen is desired.

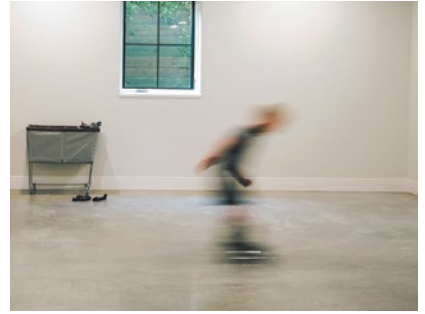


**SUPER SHEEN
1500 GRIT, LEVEL 3**
Super Sheen polishing produces a highly-polished surface that reflects color, light, and objects in a mirror-like reflection. This is a popular flooring option for museums, schools, and anywhere a stunning finish is desired.

MODERN

In this architectural favorite finish, the cream - or cap - of the concrete floor is honed and polished to enhance and embrace the character of the concrete and finishing techniques. Some texture and finishing marks are key elements in this finish.

Color: X
New, unsealed concrete only
Aggregate: Cream A
Finish: 0 Matte.



ESSENTIAL

An entry-level polished concrete floor that provides a smoother finish than the Modern with less aggregate exposure than Classic, that can be left natural or have color added. The inherent inconsistency of aggregate will offer a mottled coloring in stains or dyes.

Color: Stain or Dye
New, unsealed concrete only
Aggregate: Class A and B mixture, based on hardness and flatness of the floor
Finish Options: 0 Matte or 1 Satin



CLASSIC

The classic look when people think of polished concrete. The cap of the slab is removed to expose the small aggregates used when pouring and creates visual texture on the surface. A great base for keeping in its natural state of by adding color.

Color: Stain or Dye
Aggregate: Mostly Class B with areas of larger stone
Finish Options: 1 Satin, 2 High Sheen, 3 Super Sheen



REMODEL

Our Remodel floor system offers a great look when embracing concrete's age and character in a remodel space.

Color: Dye
Aggregate: Class C - Variety
Finish Options: 1 Satin, 2 High Sheen, 3 Super Sheen



DEEP

Digging deep into the concrete surface, we find large stones used as the building blocks of strength. When wanting an even, consistent, deep stone exposure, our Deep floor offers the look of large aggregate as the main finish.

Color: Dye
Aggregate: Class D
Finish Options: 1 Satin, 2 High Sheen, 3 Super Sheen



Options



GROUT COATING

The grout coating application fills in naturally occurring pinholes, small air pockets, and aggregate pop-outs in a concrete floor. This process offers a higher overall reflectivity and a less porous surface, and is recommended for air entrained concrete and/or concrete that will be heavily ground to remove sealers, coatings, or when aesthetics are a top priority. The availability of this option is typically unknown until the concrete floor has been prepared and the initial pass is complete.



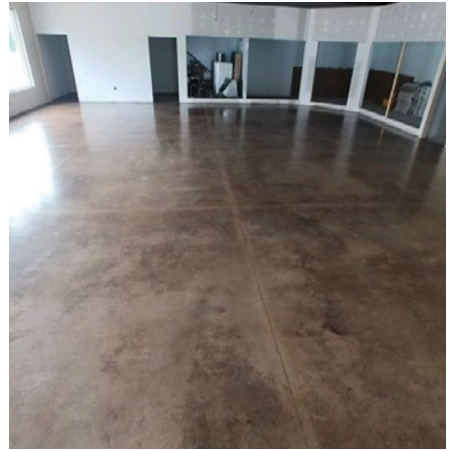
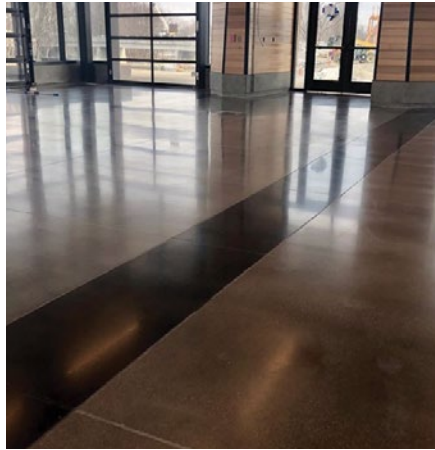
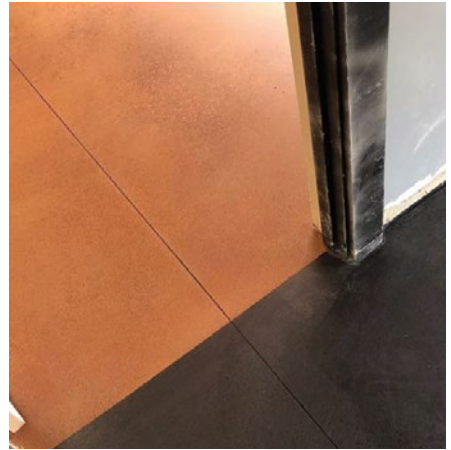
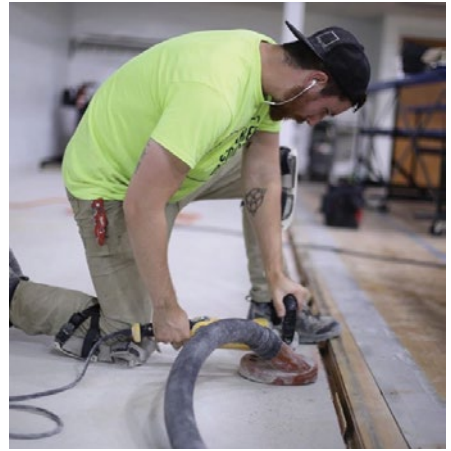
CONTROL JOINT FILLING

Control Joints are planned by an architect in the design of a space, and placed in the concrete slab when poured. These joints are filled with a polyurea compound to protect the joint edges from chipping, in addition to keeping dirt and debris out. This filler is available in many color options to complement the floor.



CONCRETE DENSIFYING + STAIN GUARD

All StrongTread Polish floor installations include a two-application process; premium concrete densification treatment and stain guard conditioning. These two steps penetrate into the concrete surface to increase abrasion resistance, decrease permeability, maintain a co-efficient of friction for slip-resistance, and provide one of the most durable hard-surface flooring systems available.



DANCER CONCRETE DESIGN

- Design Focused
- Direct Warranty and Guarantee
- Timely + Effective Communication
- Low Volatile Organic Compound Installation
- Fast Construction-to-Foot-Traffic Turnaround
- OSHA and ADA Slip-Resistance Guideline Compliant



SEALCRAFT

SealCraft by Dancer Concrete Design is a brand of clear, topical floor sealer that provides similar aesthetic qualities of polished concrete as well as additional moisture repellency.





SEALCRAFT SHINE SAVER

SealCraft Shine Saver enhances the appearance and performance of bare concrete floors. Typically selected when a more affordable or faster installation is needed, this sealer prevents dusting and boosts the aesthetics of any space. In higher traffic conditions, subsequent coats can be easily and affordably applied to maintain effectiveness long-term.

Finishes: Glaze

Uses: Storage, retail, municipality

SEALCRAFT CLEAR+

SealCraft Clear+ is designed as a hybrid to provide the look of polished concrete with the topical sealing advantages of epoxies and urethanes. Our SealCraft Clear+ system offers stain and water resistance, and is a good fit in wet areas where a polished concrete look is desired or additional finish options are needed.

Finishes: Gloss, Satin, Grip

Uses; Light duty kitchens, restrooms, cafeterias, theaters, residential, wet areas





SURFACE

.....

Surface by Dancer Concrete Design is a brand of overlays used as a topping on sound and solid concrete surfaces. Our resurfacing process allows us to bring a new look to a space, without the hassle of a complete rip out and replacement. The new surface is durable, strong, and great for remodeling projects where polished concrete is desired but the existing substrate is in less than desirable condition.

SURFACE POLISH

Surface Polish overlay is a concrete overlay that resembles traditional Class B (See page 4) aggregate exposed concrete. This overlay is finished and polished much like a traditional concrete floor, and it can be left natural or colored with dyes or stains.

See page 9

Finishes: StrongTread Clear +, Gloss, Satin, Satin with Grip or StrongTread Polish, Matte, Satin, High Sheen, Super Sheen.
Uses: Retail, Residential, Corridors, Schools
**not for heavy industrial use or vehicle traffic.*



SMOOTH SURFACE

Smooth Surface overlay is a cream finished overlay providing a soft, rich texture and finish similar to a brand new concrete pour. This overlay has the option to be colored with dyes or stains and is finished with SealCraft Clear+ urethane finish.

Finishes: SealCraft Clear +, Gloss, Satin, Satin with Grip.
Uses: Retail, Residential Installation Thickness: 1/8"
**not for heavy industrial use or vehicle traffic.*

SURFACE TERRAZZO

Surface Terrazzo is based on the old world Italian flooring installation of marble chips or broken stones and glass mixed with an epoxy matrix to create an endless array of patterns, colors, and finishes. The Terrazzo topping is a 1/4" system that can be installed with new concrete. Also, older Terrazzo floors can be refinished with our StrongTread polished floor system.

Finishes: Waxed or StrongTread Polish
Uses: Airports, Schools, Corridors, Hospitals



The Pour

We work with existing concrete surfaces to protect and enhance the surface. The correct placement of the concrete slab is of extreme importance for us to provide our client with a great finished surface. The following are guidelines to pouring new concrete for a Dancer Concrete Design installed floor. Finishing procedures should be consistent.

Our StrongTread Polished Concrete systems are installed in two scenarios: (1) on a new slab intended for a polish, and (2) in a space that is being remodeled. When polishing concrete, the more variables you can control, the more predictable the process and smoother the install. In both scenarios, we enhance the existing substrate to create durable & well-designed floors. For a system that is being installed on new concrete, we have found that it takes the right people, plan, and process to pull off the best install possible. As you begin the journey, we encourage you to use us as your polished concrete resource. Feel free to read through and pass along our Poured Concrete Specifications. We recommend that anyone involved in the pouring process has access to these specifications.



For a quick review, here are some basics:

· PEOPLE

Hire a professional concrete company – guys that use ride-on power trowels and have a full crew every day. For this project, be a little more hesitant to hire your uncle's friend Jim who poured concrete a few times or some company that says, "Yeah – We've done that before!" Hire someone who approaches the pour like a true craftsman. The best results will come from a professional team. If you need a local recommendation, please let us know.

· PLAN

Pass along the Poured Guidelines Specification to your contractor. Find it on our website, under Helpful Resources. Call us, and schedule a pre-pour meeting. Set strong expectations up-front for the best work at the end.

· PROCESS

The floor should be SMOOTH and FLAT per ACI Guidelines; we will take some burn marks, rather than texture, or ridges. Edges and handwork around the drains should maintain a smooth and flat consistency. No acrylic cure and seals are applied after the pouring.

For detailed information about pouring concrete for polished concrete please see the Resources section of our website, or contact your project manager

STAIN DYE

When choosing a color for your concrete project, there are two options to choose from - reactive stained concrete or dyed concrete. Below, we will talk about each option and hopefully provide better clarity for which one fits your project the best.

Reactive Stained Concrete

Reactive concrete stains work with the existing chemical makeup of the concrete to produce variegated coloring throughout the surface. This coloring method typically produces a marbled appearance on the concrete surface. This method provides permanent coloring to floor surfaces.

Pros

- Permanent Color - UV Stable - Can be used indoors or outdoors
- Variegated - Marbled Look
- Unique and One-Of-A-Kind Look

Cons

- Not a good solution for exposed aggregate
- Longer Install - 1 Extra Day
- Customer must anticipate variation and differences in the floor.

Dyed Concrete

Dyes work the existing porosity of the concrete to penetrate into the surface layer of the concrete floor to color the surface. Dyes offer a more consistent and color-matched look. This coloring method is very popular for interior concrete floor projects and commercial settings. This is the base level offering from Dancer Concrete Design.

Pros

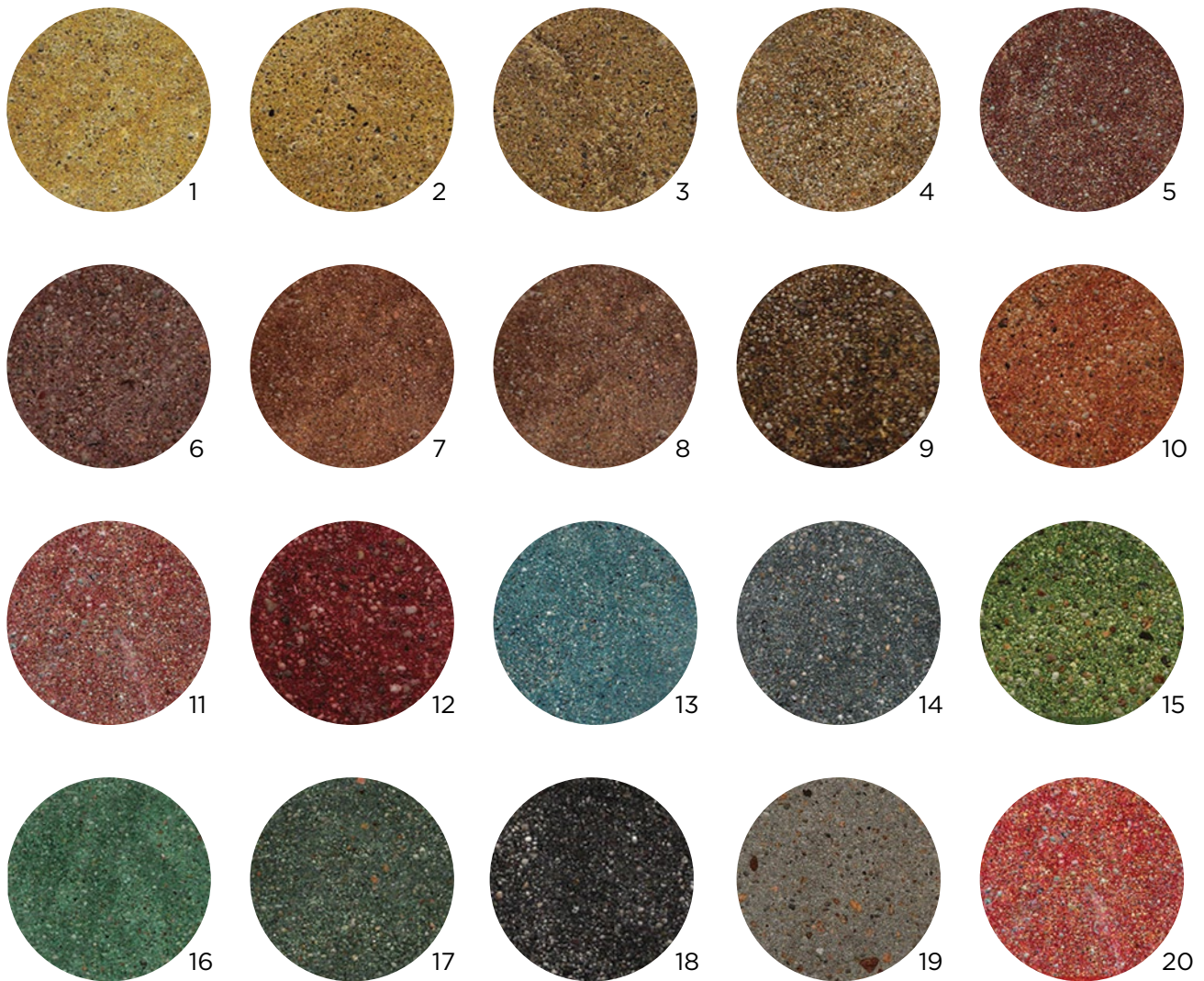
- Affordable coloring option - Quicker Install
- Consistent
- More reliable coloring
- Works well when exposing aggregate

Cons

- Cannot be used outdoors
- Dyes may fade when exposed to water long-term

Penetrating --- Concrete Dyes

A penetrating concrete dye can be used on indoor concrete polishing or sealing applications. This dye penetrates deep into porous concrete surfaces, creating a long-lasting, durable color treatment for interior concrete floors. Depending on the concrete substrate, this translucent coloring system will have variations. The penetrating concrete dye is the most economic coloring solution.

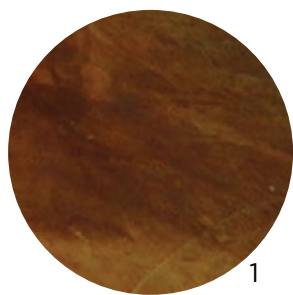


1 Gold • 2 Raw Sienna • 3 Caramel • 4 Sand • 5 Terra Cotta • 6 Mahogany • 7 Saddle Brown • 8 Chocolate Brown • 9 Walnut • 10 Burnt Sienna • 11 Chestnut • 12 Maroon • 13 Turquoise • 14 Slate Blue • 15 Green • 16 Pine Green • 17 Forest Green • 18 Midnight Black • 19 Grey • 20 Red

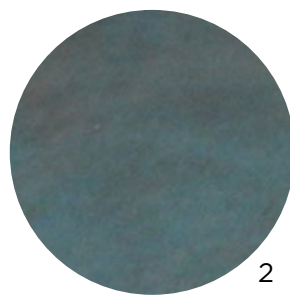
Reactive Concrete Stains

Reactive concrete stains work with the existing chemical makeup of concrete to produce variegated coloring throughout the surface. This coloring method provides permanent coloring to the floor surface, and typically produces a marbled appearance.

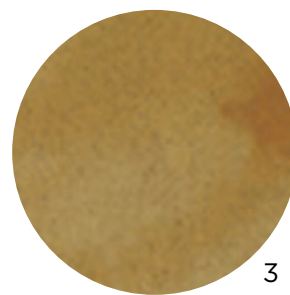
*permanent Variegated - Marbleized Look. *Note this flooring color can look splotchy and inconsistent for some.*



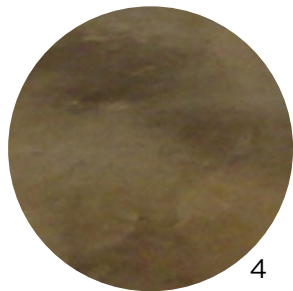
1



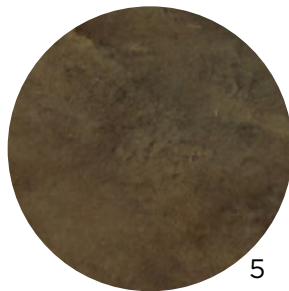
2



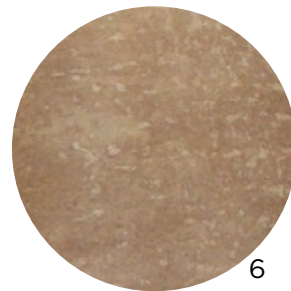
3



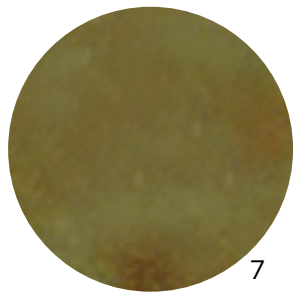
4



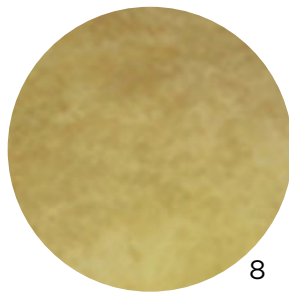
5



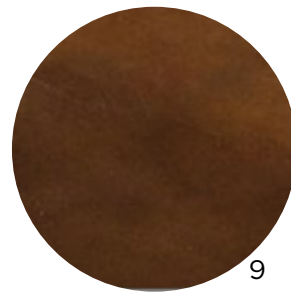
6



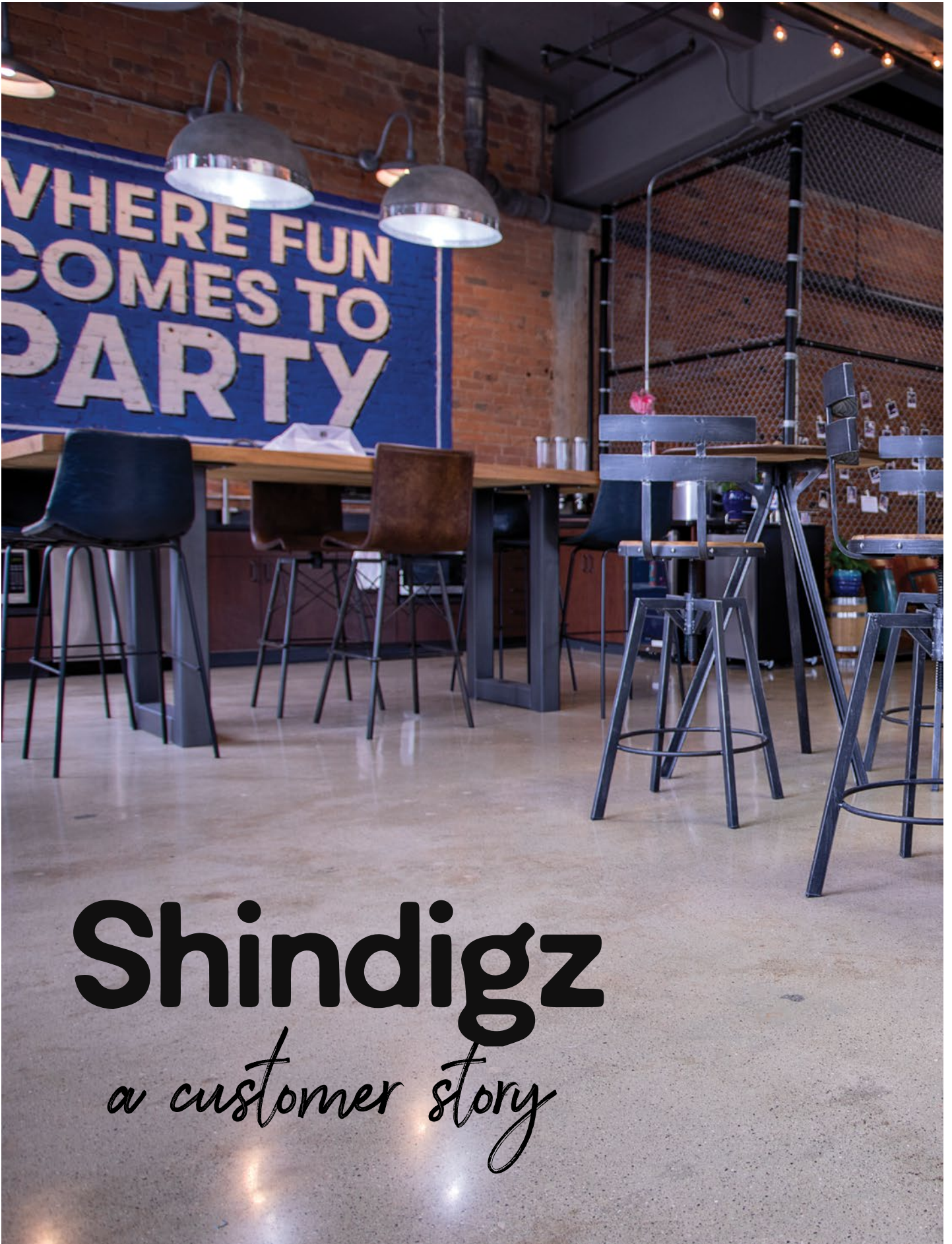
7



8



9



Shindigz

a customer story



Shindigz, one of the country's largest online party retailers, recently purchased local landmark building, Harrison Place, and turned part of it into their new corporate headquarters. They renamed the building Shindigz Place.

Key elements of this design are focused around an open-concept office that encompasses the 4th floor. Instead of covering up the character and original components of this historic space, the owner embraced and highlighted the exposed ceiling and brick walls. Keeping with the theme, the decision was made to utilize the existing concrete as not only a finished floor, but as a design element as well.

As with most older buildings, the condition of the substrate made it challenging to visualize the finished product. With layers of various glues and adhesives bonded to the surface, we had our work cut out for us. However, we saw the potential of the space, and we took ownership of bringing the floor to life and transforming the space.



Our process consisted of three main steps: grinding, honing and polishing. First, we were tasked with removing old adhesives and prepping the surface for polish. This required several passes with some of our most aggressive tooling, which is what provided our Class-C Aggregate exposure. Afterwards, we patched many imperfections in the floor and also included a full grout coat to address the smaller pinholes. From there, we began to hone the surface in preparation for polishing. This is where the floor came together and the vision started to become reality. In our final steps, we polished the surface to a 400-grit sheen. Some of the most rewarding work that we do is in these older spaces where we can utilize our StrongTread: Remodel system.



Specifications

Location: Downtown Fort Wayne, Indiana

System: StrongTread Remodel Polished Concrete

Contractor: Weigand Construction

Architect: Design Collaborative

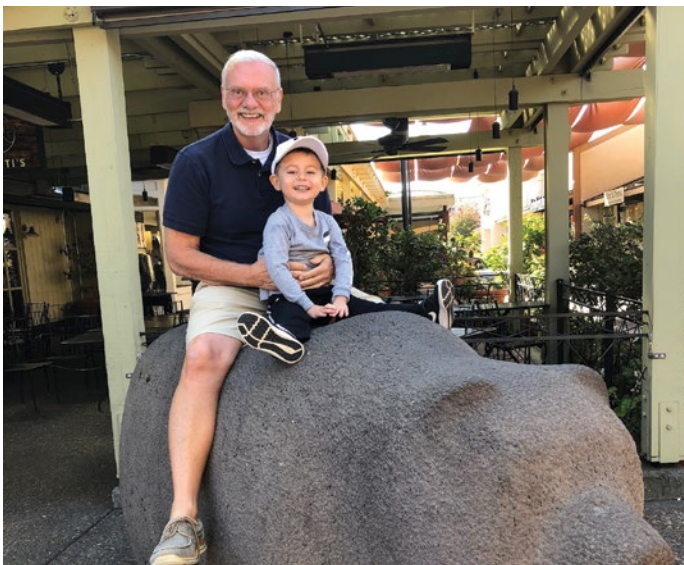
Team Member Spotlight



DENNIS BARYLSKI

BUSINESS MANAGER

Dennis has been the business manager for Dancer Concrete Design since 2014. He has his hands in just about everything around the office including human resources, accounting, event planning, and more. He enjoys the community at DCD and jokes that the group of guys keeps him young. He has three children and two grandchildren, and he enjoys experiencing life with them whenever he can.



Slip Resistance of Concrete

GAINING TRACTION

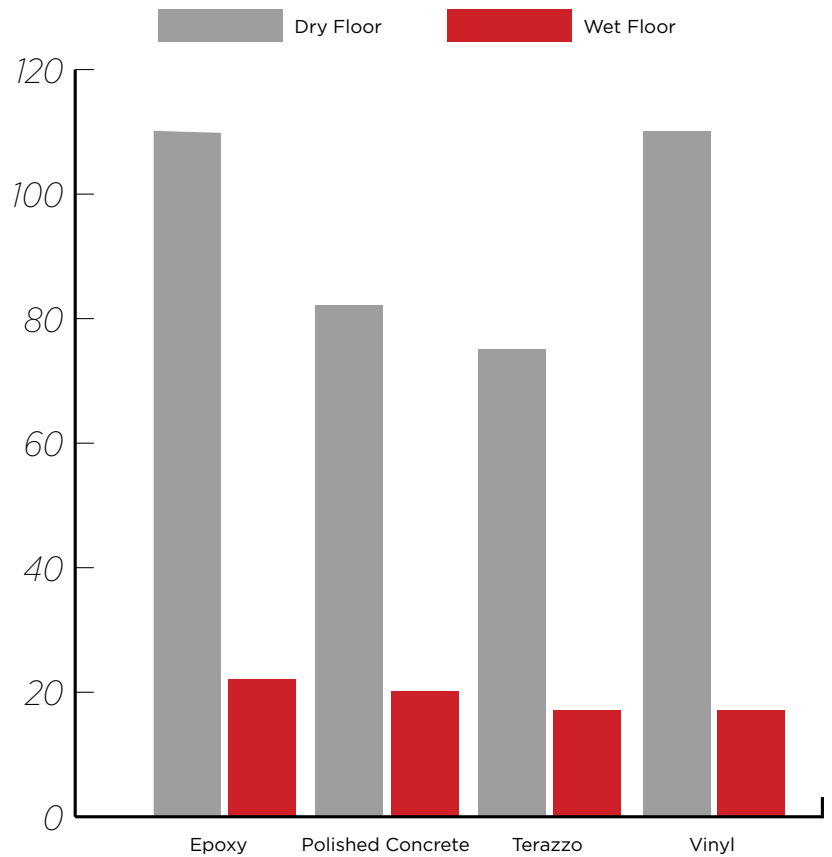
With the increasing popularity of polished concrete as a flooring solution, we find ourselves answering a lot of questions about how slippery the finished product is. Safety, after all, is a major factor when selecting a flooring finish.

Our simple and best answer: Polished concrete meets or exceeds all slip coefficient requirements per the ADA and OSHA specifications. That means the safest people we know say it's safe!

Our more practical input: Polished concrete offers an affordable, durable, and low-maintenance flooring solution and has been selected for major retailers across the country. Thousands of miles a day are walked in these environments, rain or shine. As we interact with these surfaces at the grocery, hardware, boutique, restaurants, and gym, we don't think twice about how slippery the polished concrete is. We actually interact with polished concrete surfaces more than we realize.

In an environment where excessive liquids are expected to be present, but a concrete

Slip Resistance per the Pendulum method EN13036-4*

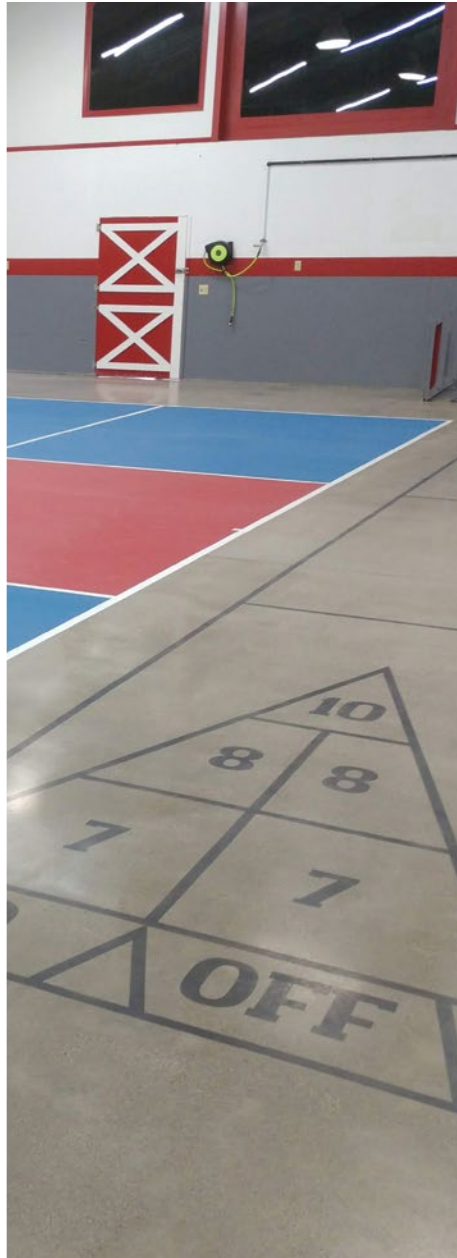


Source: *SP Report, F812033, Technical Research Institute of Sweden, 2008-06-13

look is still desired, our SealCraft Clear+ system offers a grip additive that does an outstanding (often excessive) job enhancing the slip resistance. For more information about all of our systems, feel free to check out our website at dancerconcrete.com or give us a call. We would love to chat with you about your project.



PLAY



We have a variety of custom layouts that can be used to accommodate different types of courts installed with epoxy flooring or polished concrete. So, whether you are looking to add a pickleball, basketball, or shuffleboard court, or are looking to add a business or school logo to your gym, we have many options available to choose from.



WORK HERE

We are a growing, family-owned and operated, contracting company. We specialize in polishing concrete floors and epoxy floor coatings for the best commercial construction projects, industrial environments, and high-end residential homes. We do not pour any concrete, and our work is done inside year-round.

Our local-based model allows us to work in a way that we are home most nights with our family. We currently operate in Fort Wayne and are growing in the NE Indiana area around South Bend / Goshen. We have grown because we hire and retain people who value hard work, problem-solving skills, and a positive attitude.

DRIVING FORCE. We believe we have been called by a Creator to build a remarkable business that drives growth in our team, and where others can count on us to deliver the BEST WORK. This is the driving force behind everything we do. This is how we make a difference.

As we grow our team, we hope to attract people who want to be challenged and grow personally. We want team members who believe that by growing personally, they are better able to serve others.

The Best Small Business Benefits; 60% Employer Paid Health Insurance, 7 Paid Holidays, 2-3 weeks of vacation with personal days, \$250 yearly clothing Allowance, Up to 5%-401k Match, bonuses, progressive promotion opportunities, paid leadership training, payouts for reading books, and the opportunity to work within a local, family-owned and operated business.



We want the best for you, and we operate in a drug-free and smoke-free environment. If you like getting dirty and sweaty, have a valid driver's license, and the availability for a small amount of travel (only 12-15 nights per year), then let's chat.

If you have the drive and think THIS IS the right place. Let's chat. Nick's Phone: 260.415.1951

Meet The Team



Scott Bailey



Dennis Barylski



Andrea Bauman



Alexis Dancer



Nick Dancer



Ben Doege



Ryan Everly



Jacob Janssens



Joel Janssens



Robert Karn



Billy Osborne



Ben Reuille



John Ross



Damin Royal



Davion Williams



Roger Wilson

Before We Start.

Our goal is to install the most durable and well-designed floors for you and/or your client. We don't need a lot to make that happen, but there are a few items that are integral to our success. Jacob or Nick M. will be working with you in order to ensure these items are on site and ready to rock before the team arrives. Information regarding pricing or change orders for your project can be provided by your DCD Project Manager.



POWER

Single Phase 240V – 30/50 amp or Three Phase 240V – 50/60 amp or Three Phase 480V
Whip provided by DCD, 3-phase breaker by client, 3-5 Dedicated 110v Outlets



WATER

Water is utilized at various stages throughout our process. Access to a water supply near the working area helps maintain efficiency and effectiveness.



LIGHTS

A well-lit space allows our craftsman to see the floor as they install your system. This gives them the opportunity to identify problem areas and fix them prior to completion.



HVAC

Air circulation in a closed-in space allows a new slab to acclimate in the intended environment. By getting in after the slab has had time to acclimate, we can patch any cracks that appear during the cure. Products utilized for our systems have temperature and humidity thresholds that are much easier to meet in a controlled space.



TRASH

While our processes can provide “green” flooring solutions, we do produce some waste. Our team will need access to a dumpster while on site.



FACILITIES

In a world of automation, we take pride in the human element that we have to offer. This means that we sometimes have to go #1 or #2. Having operational facilities on site can help us mitigate complaints from the neighbors.



PATCHING

Even the newest of floors sometimes require patching and repairs in order to create the best finish possible. Unless noted on your proposal, patching and repairs will be discussed as they present themselves. Pricing depends on several variables and your project manager will chat with you about the options.



EMPTY SPACE

We lose a lot of friends on this one, but that's the life we're willing to live in order to provide a stellar floor. We ask for:

- Exclusive access to the floor during our process
- All doors and trim to be removed or not yet installed
- Any non-permanent items removed off the floor
- An initial sweep & scrape to remove large debris and excessive dirt



TREADWELL



Epoxy floor coatings outperform other hard-surface flooring choices in environments that receive the most wear and tear. With this style of flooring, there doesn't have to be any compromising. Durability, safety, aesthetics, and simple maintenance are all aspects that epoxy floor coatings deliver to your environment. Choose between several finish options that fit your situation - smooth, flake broadcast, sand broadcast, metallic, or urethane mortar. Invent your space the way you envision it with multiple design options.

SELECTING THE RIGHT SYSTEM

Understanding the difference between epoxy options

	TREADWELL	Cost	Maintenance	Impact Resistance	Thermal Shock
SOLID	Color +	●	●	●	
	Industrial +	● ●	●	● ●	
	Shop	● ●	●	● ● ●	
	Urethane Mortar	● ● ●	●	● ● ● ●	●
DECORATIVE	Chip	● ●	●	● ●	
	Quartz	● ● ●	●	● ● ● ●	
	Metallic	● ● ●	●	● ●	

● Mop ● Broom/Squeegee

EPOXY OPTIONS

INTEGRAL COVE

In kitchens, restrooms, and other wet areas, integral cove provides seamlessness between the floor and wall. This prevents mold and mildew from growing behind the base and allows for simple maintenance, such as hosing down a room. Integral Cove is available in several different heights.



URETHANE TOPCOAT

Our 3-part high performance urethane topcoat increases the abrasion resistance and chemical resistance of your resinous flooring system. This can withstand up to 3 times more wear than traditional topcoats. The additional topcoat also increases the UV resistance of the resinous flooring system.

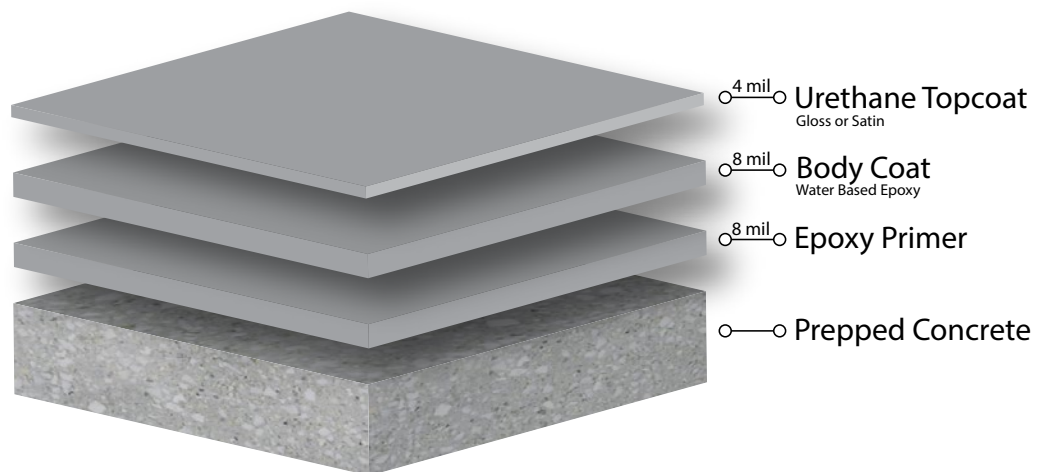


COLOR +



TREADWELL COLOR EPOXY

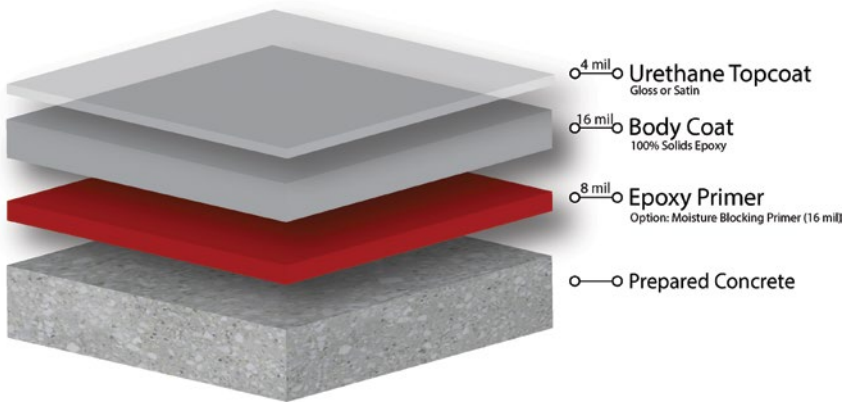
An affordable, 3-layer, water-based, solid color epoxy and urethane flooring system for foot traffic and light duty rubber-wheeled traffic.



GREAT FOR:

Foot Traffic, Break Rooms, Storage, AV Closets, Park Buildings, and Small Warehousing

INDUSTRIAL +



TREADWELL INDUSTRIAL EPOXY

Treadwell Industrial Epoxy floors are a cost-effective and affordable installation. An entry-level 100% solids epoxy system that balances affordability and durability. This floor will produce a solid-colored, seamless floor.

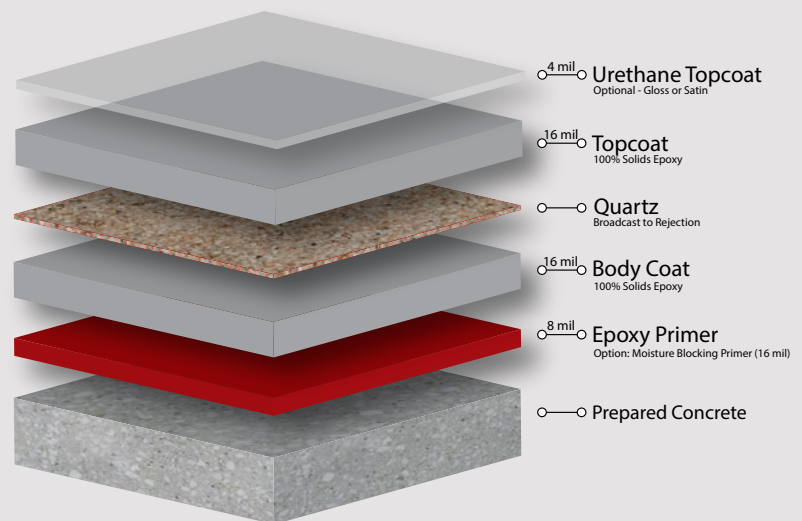
GREAT FOR:

Recreational Rooms, Industrial Applications, Break Rooms, Manufacturing Facilities, Locker Rooms, Commercial Spaces, and Animal Caging

SHOP

TREADWELL SHOP EPOXY

Treadwell Shop is a high solids epoxy floor coating selected for its durability, safety, and aesthetics. This epoxy floor system offers the incorporation of a full broadcast aggregate between layers of 100% solid epoxy resins. This results in enhanced abrasion resistance, impact, and slip resistance over thinner epoxy applications. Treadwell shop is designed to hold up to the wear and tear in a shop, heavy manufacturing spaces, breweries, or commercial kitchens.



GREAT FOR:

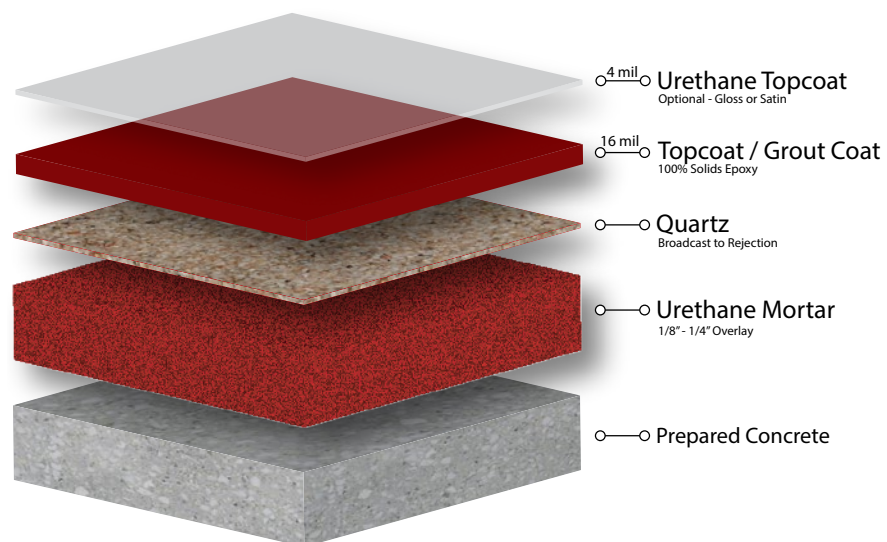
Shop Floors, Breweries, Commercial Kitchens, Heavy Manufacturing, and Automotive Spaces

URETHANE MORTAR



TREADWELL URETHANE MORTAR

Urethane mortar flooring is used in the most abusive floor settings. It upholds performance in extreme temperatures. This floor requires no priming and can be installed on “green” concrete, offering quicker installation than other epoxy flooring systems. Urethane mortar floors offer all of the benefits of broadcast epoxy, with the additional benefits of increased impact and chemical resistance.

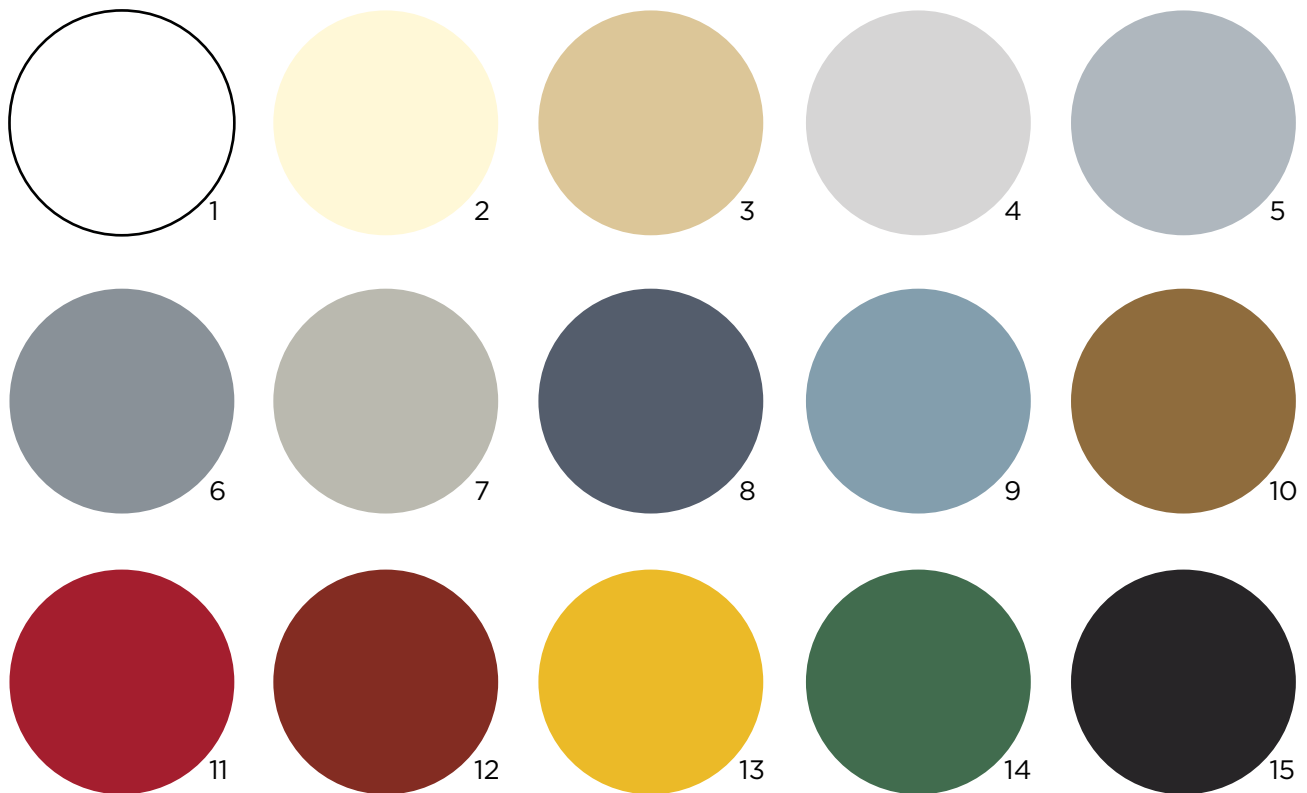


GREAT FOR:

Food Grade Facilities, Industrial/Commercial Kitchens, Heavy Duty Manufacturing, Breweries, and areas where Thermal Shock is of concern

Solid Colors

Standard Colors: coordinate your branding with your interior space by selecting one of our solid epoxy colors. Note: colors may be affected by age, heat, and exposure to sunlight. Opacity can vary between products. Please request an actual color sample of the system that you're considering to confirm the most accurate representation.

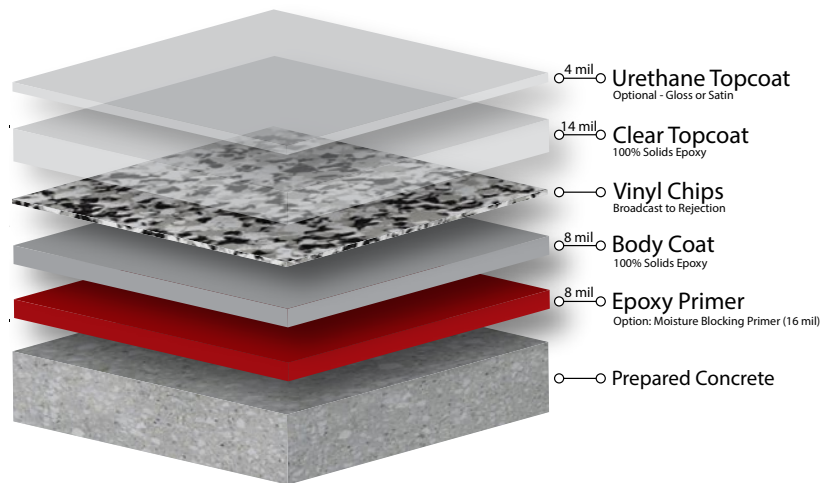


DECORATIVE CHIP



TREADWELL DECORATIVE CHIP EPOXY

Chip Epoxy floors are full broadcast coatings that provide slip and stain resistance, durability, and versatile design options. There are countless chip combinations that are available to fit the style of your space. This system is seamless, providing simple maintenance over the life of the floor.

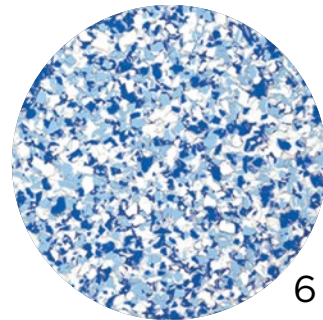
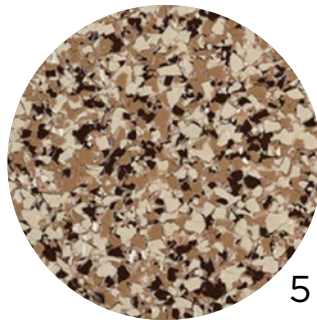
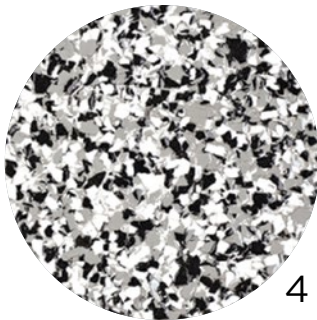
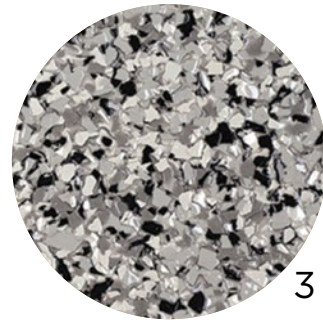
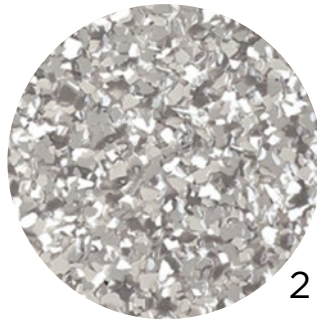
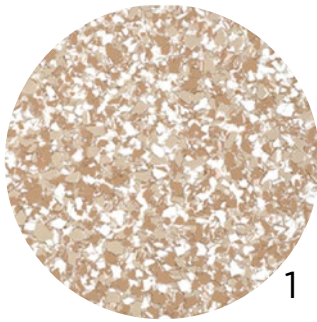


GREAT FOR:

Garages, Recreational Rooms, Prep Kitchens, Industrial Applications,
Break Rooms, Locker Rooms, and Commercial/Retail Spaces

Decorative Chip Colors

Full broadcast epoxy flooring offers a seamless solution for your floor. We can't begin to show you all of the possible color options; however, listed below are a few of our favorite combinations. The base colors are included in the initial proposal. Custom color blends, various chip sizes, and other upgrades are available as well.

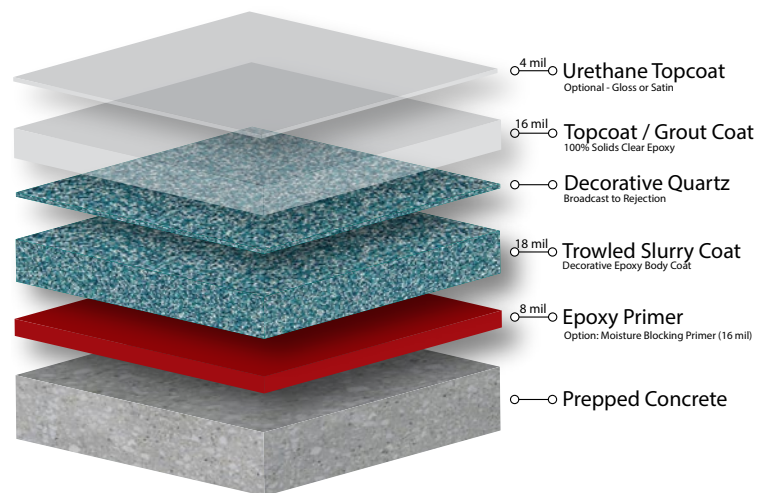


DECORATIVE QUARTZ



TREADWELL DECORATIVE QUARTZ EPOXY

Another broadcast flooring option is quartz epoxy floors. Quartz epoxy offers a high-end look while still performing in impact resistance, slip resistance, and seamlessness. Like Chip epoxy floors, the quartz sand color combinations are endless. With additional options available, there is a system for every environment.

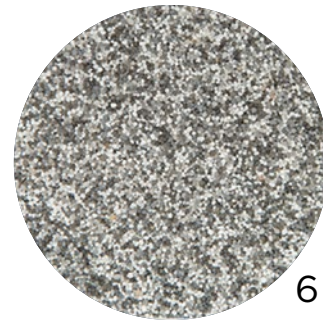
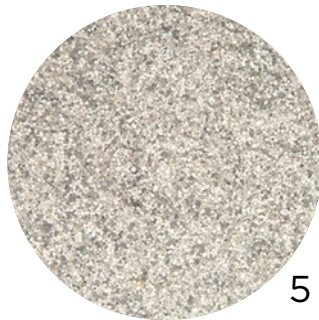
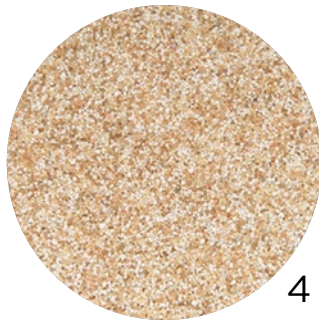
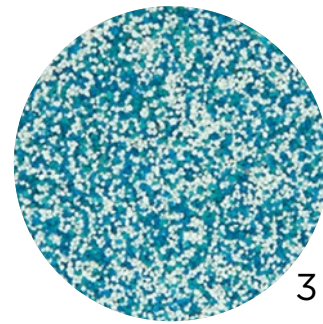
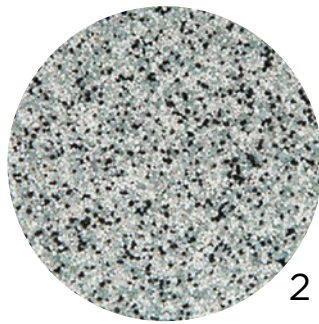
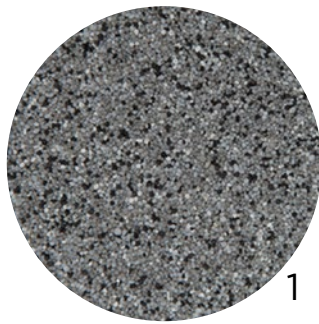


GREAT FOR:

Commercial/Industrial Kitchens, Locker Rooms, Walkways, Wet Areas, Showrooms, and Multi-purpose Spaces

Decorative Quartz Colors

Quartz Epoxy flooring also offers a seamless solution for your floor. We can't begin to show you all of the possible color options; however, listed below are some of our favorite combinations. Custom color blends and other upgrades are available as well.

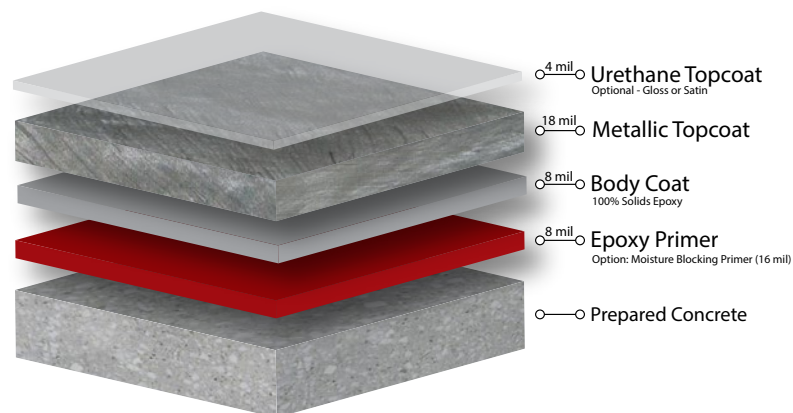


METALLIC



TREADWELL METALLIC EPOXY

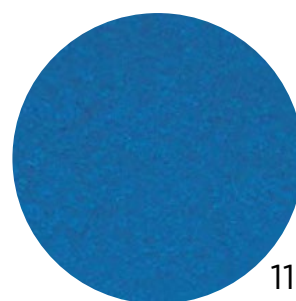
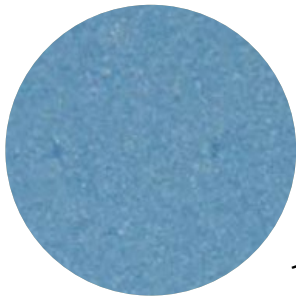
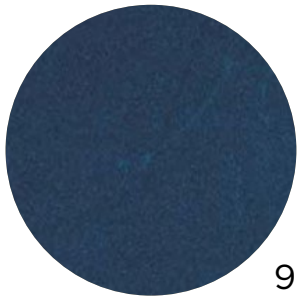
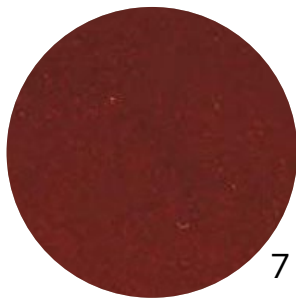
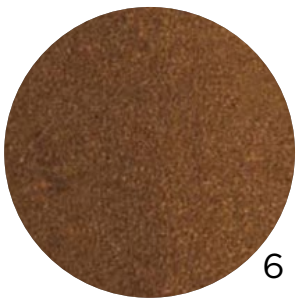
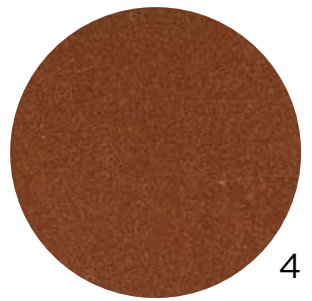
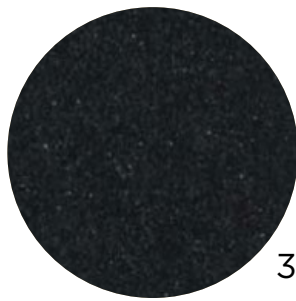
Our metallic epoxy floor coatings combine design and durability to provide you with a long-lasting floor surface that looks great in residential settings and can still perform in rigorous commercial settings. The high sheen of the metallic surface combined with unique color combinations provides you with a look of depth that has never been seen before in a durable floor material. Metallic coatings are composed of metallic pigments which are held in a suspension of resins. The color technology of this system creates movement and a sense of depth when light hits the surface. Metallic flooring solutions will always produce a unique, one-of-a-kind finish for your space.



GREAT FOR:

Commercial/Retail Spaces, Restrooms, Showrooms, Residential Basements, and Waiting Rooms

Metallic Colors





NORTHROP HIGH SCHOOL

A CUSTOMER STORY
by Kathleen Welling

THE WHY

Schools play a crucial role in shaping and perpetuating community development. The strength of our schools determines the strength of our communities.

With a total of 50 schools and over 29,000 students in the Fort Wayne Community School system, it is the responsibility of the Fort Wayne district to maintain these schools and hold them to a standard that facilitates academic success. Maintaining the infrastructure in these schools sets the stage for stronger communities in the future.

With this in mind, REPAIR FWCS was born. In May 2012, voters approved a referendum to invest \$119 million into the Fort Wayne Community School system in order to make necessary renovations over the next four years. The goal of the program was to create well-maintained facilities that meet today's educational needs. Following the success of the program, a second phase was launched in 2016 to continue renovations. Two projects included in this new phase were the drama room and the cafeteria at Northrop High School. Dancer Concrete Design, with the help of Barton-Coe Vilamaa Architecture and contractor Michael Kinder and Sons, took ownership of these projects and remodeled the rooms to fit the vision that was created through this referendum.

THE VISION

Walking through the drama room and the cafeteria at Northrop High School pre-renovation, it was easy to see that years of typical high school wear and tear had worn the rooms down to the bones. The old VCT flooring had been stained, scratched, and scuffed, and it was clear that it needed to be replaced. There were four main priorities established when creating the vision for the new rooms: updated design and appearance, increased sustainability and reduced energy costs, less maintenance, and long-term durability.



APPEARANCE AND DESIGN

From a design standpoint, the old flooring wasn't adding any aesthetic value to the rooms. Flooring is the first element noticed when walking into a room; it gives a room personality and creates a certain "feel." The architects wanted a sleek, modern design that would establish an atmosphere to complement the purpose of the rooms.

For the drama room, they envisioned a "black box" feel – a simple, sleek, black floor that would form a space in which creativity and self-expression could be cultivated. The flooring style that was selected to fulfill this vision was a black, classic-style, StrongTread polished concrete.

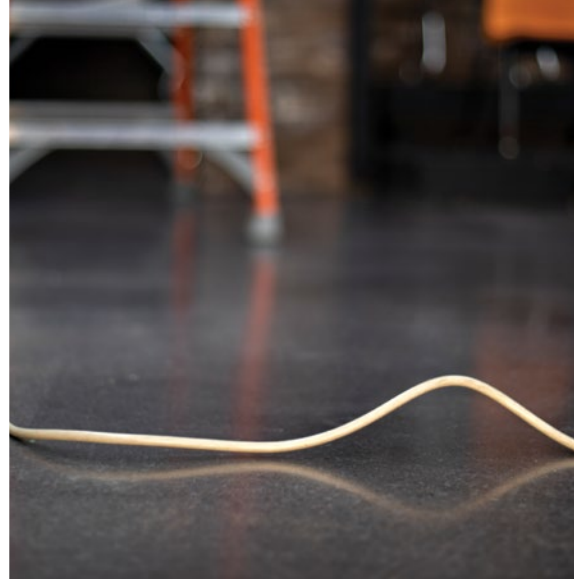
For the cafeteria, they wanted a flooring style that could exude an air of vitality and school spirit. The flooring style chosen was a multicolored, remodel-style, StrongTread polished concrete. With this style, there was flexibility in color and design. The colors chosen were Northrop's school colors, orange and brown, with a high sheen finish that reflects light and makes for a brighter, more vibrant space.

SUSTAINABILITY

One of the main goals of the project was to reduce the overall energy costs of the building and to move towards more sustainable facilities. The reflective properties of polished concrete floors improve the ambient lighting in rooms, therefore reducing energy costs overall. Due to the lower level of maintenance required, there is less of an impact on the environment from the continued upkeep of stripping, waxing, and polishing of the old VCT flooring. In addition, polished concrete uses existing concrete surfaces, which eliminates the need for additional material coverings.

DURABILITY

Due to the flooring being placed in high traffic areas, the project leaders knew that the flooring had to be durable and able to withstand the heavy use that a high school environment would put it through in years to come. Polished concrete floors offer one of the most durable options for flooring on the market today; they can be refinished as often as needed, and they never need replaced.



THE OUTCOME

Following the completed renovations, several of the project leaders offered positive feedback about the remodels. The architect that ultimately made the decision for the flooring styles, Adam Weesner of Barton-Coe-Vilamaa Architects, commented, "I have only heard great things from the staff and students over at Northrop. Everyone seems to be enjoying the new floors." In addition, Josh Summers, Coordinator of Capital Projects at FWCS, mentioned that Dancer Concrete was a pleasure to work with. "The overall project turned out great, and Dancer Concrete was thorough, pleasant to work with, and had everything completed on time and on schedule."

Furthermore, Heather Krebs, Coordinator of Program Controls at FWCS, voiced her appreciation for the hard work that was done on the rooms to help fulfill the vision originally established through the referendum in 2012. She stated, "We sincerely appreciate the support and trust that the people of Fort Wayne have put into the REPAIR FWCS program to achieve these goals for the benefit of not just our schools, but our community as a whole."

Through the simple process of remodeling floors, students at Northrop High School have been given a space that is modern in design, functional, and sustainable. They now have the opportunity to study and learn in an environment that encourages academic success.

Moisture in Concrete

OUR APPROACH TO HIGH %Rh CONTENT

At certain levels, moisture content in a slab can cause various types of flooring solutions and adhesives to fail or result in less than desirable outcomes. This is no different when it comes to our standard TreadWell epoxy systems. As we strive to provide the most durable and well-designed floors, moisture in a slab is a reality that we want to mitigate appropriately sooner rather than later.

READING %RH:

Each of our TreadWell epoxy flooring solutions which required 80%rh thresholds will include one moisture content test. This is achieved by installing a moisture probe into the slab and pulling a reading once it has acclimated. If additional moisture probes are desired, we can make that happen. Each additional probe installed per project will cost \$150.00.

WITHIN TOLERANCE:

If the reading falls within the required tolerance per manufacturer specification, we will proceed as planned.

ABOVE TOLERANCE:

What if the reading exceeds the 80%rh tolerance per manufacturer specification? We are here to provide the following options:

OPTION 1

Bring in the testing pros. We recommend reaching out to a third-party testing company. They will be able to provide a more in-depth analysis of the moisture situation in your slab. If their analysis shows %rh within tolerance, we will stand by our 2-Year Warranty.

OPTION 2

DCD Moisture Blocking Primer. This option offers the best solution within our power and extends our warranty to 5 years. This solution is offered as an additional option and comes at an added expense. Beyond providing a moisture mitigation system, the upgraded primer adds durability and thickness to the system overall.

OPTION 3

Install the system utilizing the standard primer. This option is not recommended as portions of our 2-Year Warranty would be void. We always stand by our craftsmanship and if you are not satisfied with the system due to something that we could have done better, let us know and we will make it right. Should the bond of the epoxy fail due to a moisture related issue, we would not be able to warranty the repair.



INDUSTRIAL

LANE STRIPING

Lane Striping offers the ability to direct traffic flow for safe and clean working environments.

JOINT REBUILDING

A unlevel joint can cause damage to forklifts, product, and operators. Our joint rebuilding process repairs the joint to provide a smooth, level, and long-term flat solution in the most rigorous environments.

PATCHING AND REPAIR

When complete cutting and removal of concrete surfaces are not viable options, our topical repair solution reconstructs concrete to like-new condition without gas-powered equipment, water cutting, or removal and curing times. This is a faster, stronger installation and a more efficient option than removal.

SURFACE PREP

Our hourly, daily, and weekly grinding options come as a complete package of operator, grinder, and vacuum equipment. With these, we can level, smooth out, or rough up a surface. We have the ability to mobilize quickly and take care of problem spots when they arise..

A map of the state of Indiana is shown in a light gray color. Numerous small red dots are scattered across the map, representing various service area locations. The dots are most densely clustered in the northern and central parts of the state, with a significant concentration in the northeast quadrant. There are also several smaller clusters of dots in the north, south, and west regions.

SERVICE AREA

- Working with forward-thinking clients who seek the best in design, durability, and value. We work with clients with about an hour's drive from Fort Wayne and are currently growing the business in the NE Indiana area near South Bend and Goshen.

Capabilities + Warranty Info

OUR MACHINERY

We began as a small, van-based contractor with the tools to complete a 100 SF project and have grown to complete projects as large as 100,000 SF. Our specialty equipment capabilities range from all tools and equipment to grind for surface prep or finish with the highest shine polish.

From a 7" handtool vacuum combo to one of the largest grinders in the region, we have the machinery and vacuums to handle any job without rentals.

DANCER CONCRETE'S 2-YEAR WARRANTY

For installations where Dancer Concrete Design is listed as the manufacturer and installer, the warranty will be increased to a 2-year, all-inclusive, labor and materials warranty. This is the standard warranty on all private work and jobs where the system selected is a Dancer Concrete Design brand such as StrongTread, SealCraft, Treadwell, or Surface.





4411 Engle Ridge Dr.
Fort Wayne, IN 46804
260.748.2252
dancerconcrete.com

Design Focused
Direct Warranty and Guarantee
Timely + Effective Communication
Low Volatile Organic Compound Installation
Fast Construction-to-Foot-Traffic Turnaround
OSHA and ADA Slip-Resistance Guideline Compliant